

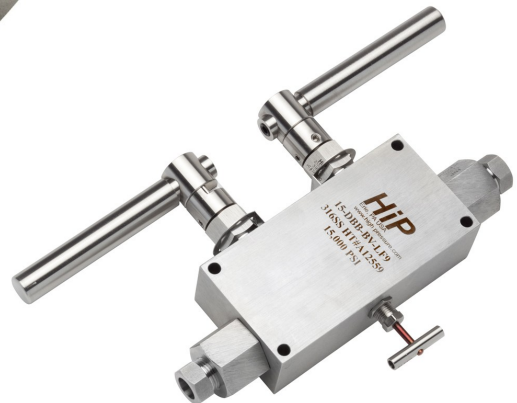


High Pressure Equipment

A **GRACO**® Company

2026 Domestic Price List

*Effective
December 29, 2025*





Standard Terms

- ♦ F.O.B. - Erie, PA
- ♦ Cash Terms: Net 30 Days
- ♦ Credit Cards Accepted
- ♦ 1% interest per month to be charged on all past due accounts.
- ♦ Not all available spare parts are shown in this price list. If you are unable to locate a given part, please contact our Customer Service department.
- ♦ Graco High Pressure Equipment Company reserves the right to change any of the prices shown in this catalog, without prior notice.

Connection Components

All VALVES and FITTINGS (except nipples) include the necessary Glands and Collars (sleeves) where applicable. When Glands and Collars are not required, please specify on the order and deduct the following amounts <i>per opening</i> :	AF1	\$ 6.50	LF4	\$ 6.50	HF2	\$ 6.50	XF4	\$ 6.50
	AF2	\$ 6.50	LF6	\$ 8.50	HF4	\$ 6.50	XF6	\$ 9.50
	AF4	\$ 8.50	LF9	\$ 9.50	HF6	\$ 8.50		
	AF6	\$ 8.50	LF12	\$ 16.00	HF9	\$ 9.50		
			LF16	\$ 23.50	HF16	\$ 23.50		

Certifications

Note: Other certifications available upon request. Consult factory for price information and availability.

Chemical & Physical Test Reports	\$ 40.00
Certificate of Test	\$ 40.00
Certificate of Conformance	\$ 40.00
Tubing Specification	\$ 40.00
SGS Certificate	\$ 40.00
ABS Approval	Quoted by Factory
DNV Approval	Quoted by Factory
Lloyds Approval	Quoted by Factory



High Pressure Equipment

A GRACO® Company

Low Pressure Fittings & Tubing Taper Seal Valves (Catalog Page 10) 15-11AF1 \$ 190.40 15-11AF2 \$ 191.70 10-11AF4 \$ 196.80 10-11AF6 \$ 208.35 15-12AF1 \$ 191.70 15-12AF2 \$ 193.00 10-12AF4 \$ 200.60 10-12AF6 \$ 208.35 15-13AF1 \$ 204.45 15-13AF2 \$ 240.20 10-13AF4 \$ 249.15 10-13AF6 \$ 255.50 15-14AF1 \$ 204.45 15-14AF2 \$ 236.40 10-14AF4 \$ 245.30 10-14AF6 \$ 255.50 15-15AF1 \$ 357.75 15-15AF2 \$ 361.65 10-15AF4 \$ 366.75 10-15AF6 \$ 384.60 Taper Seal Fittings (Catalog Page 12) Elbows 15-22AF1 \$ 63.95 15-22AF2 \$ 67.85 10-22AF4 \$ 88.25 10-22AF6 \$ 98.45 Tees 15-23AF1 \$ 81.85 15-23AF2 \$ 86.95 10-23AF4 \$ 112.45 10-23AF6 \$ 124.05 Crosses 15-24AF1 \$ 103.65 15-24AF2 \$ 108.75 10-24AF4 \$ 135.50 10-24AF6 \$ 153.35	Taper Seal Bulkhead Couplings 15-21AF1-B \$ 115.00 15-21AF2-B \$ 120.05 10-21AF4-B \$ 133.00 10-21AF6-B \$ 138.10 Taper Seal Caps 15-21AF1-C \$ 41.00 15-21AF2-C \$ 41.00 10-21AF4-C \$ 41.00 10-21AF6-C \$ 44.85 Taper Seal Line Filters (Catalog Page 14) 15-51AF1 \$ 265.75 15-51AF2 \$ 265.75 10-51AF4 \$ 316.85 10-51AF6 \$ 330.95 Taper Seal Ball Check Valve: (Catalog Page 14) 15-41AF1 \$ 191.70 15-41AF2 \$ 190.40 10-41AF4 \$ 196.80 10-41AF6 \$ 212.05 Taper Seal Soft Seat Check Valve (Catalog Page 14) 15-41AF1-T \$ 212.05 15-41AF2-T \$ 213.45 10-41AF4-T \$ 208.35 10-41AF6-T \$ 223.70 Taper Seal Safety Heads (Catalog Page 15) 10-61AM4 \$ 179.00 10-61AM6 \$ 182.80 15-63AF1 \$ 258.05 15-63AF2 \$ 260.60 10-63AF4 \$ 267.15 10-63AF6 \$ 273.40 15-61AF1 \$ 218.60 15-61AF2 \$ 221.15 10-61AF4 \$ 224.80 10-61AF6 \$ 232.60	Taper Seal Rupture Discs (Catalog Page 16) 1,500 to 5,000 psi \$ 62.75 5,500 to 15,000 psi \$ 81.80 Taper Seal Connection Components (Catalog Page 17) Glands 15-2AM1 \$ 10.25 15-2AM2 \$ 11.65 10-2AM4 \$ 12.85 10-2AM6 \$ 14.25 Sleeves 15-2A1 \$ 6.55 15-2A2 \$ 9.15 10-2A4 \$ 10.25 10-2A6 \$ 12.85 Plugs 15-7AM1 \$ 9.15 15-7AM2 \$ 12.85 10-7AM4 \$ 14.25 10-7AM6 \$ 14.25 Pipe Connection Valves (Catalog Page 20) 10-11NFA \$ 180.20 10-11NFB \$ 180.20 10-11NFC \$ 181.50 10-11NFD \$ 275.95 10-12NFA \$ 181.50 10-12NFB \$ 181.50 10-12NFC \$ 182.80 10-12NFD \$ 278.50
---	--	--



High Pressure Equipment

A GRACO® Company

Pipe Connection Valves (Catalog Page 21) 15F-11NFA \$ 176.25 15F-11NFB \$ 176.25 15F-11NFC \$ 176.25 15F-11NFD \$ 270.85 10F-11NFF \$ 1,168.75 10F-11NFH \$ 1,558.40 15F-12NFA \$ 176.25 15F-12NFB \$ 176.25 15F-12NFC \$ 176.25 15F-12NFD \$ 274.80 10F-12NFF \$ 1,186.75 10F-12NFH \$ 1,559.70 NPT Fittings Elbows 15-22NFA 1/8" NPT \$ 107.80 15-22NFB 1/4" NPT \$ 76.75 15-22NFC 3/8" NPT \$ 76.75 15-22NFD 1/2" NPT \$ 86.95 10-22NFF 3/4" NPT \$ 209.55 10-22NFH 1" NPT \$ 344.95 Tees 15-23NFA 1/8" NPT \$ 108.75 15-23NFB 1/4" NPT \$ 116.35 15-23NFC 3/8" NPT \$ 116.35 15-23NFD 1/2" NPT \$ 116.35 10-23NFF 3/4" NPT \$ 278.50 10-23NFH 1" NPT \$ 390.95		Crosses 15-24NFA 1/8" NPT consult factory 15-24NFB 1/4" NPT \$ 121.45 15-24NFC 3/8" NPT \$ 121.45 15-24NFD 1/2" NPT \$ 134.25 10-24NFF 3/4" NPT \$ 360.25 10-24NFH 1" NPT \$ 536.60 Couplings 15-21NFA 1/8" NPT \$ 86.95 15-21NFB 1/4" NPT \$ 86.95 15-21NFC 3/8" NPT \$ 86.95 15-21NFD 1/2" NPT \$ 108.75 10-21NFF 3/4" NPT \$ 189.15 10-21NFH 1" NPT \$ 194.25 Line Filters 15-51NFB 1/4" NPT \$ 274.80 15-51NFC 3/8" NPT \$ 274.80 15-51NFD 1/2" NPT \$ 328.40 Ball Check Valves 15-41NFB 1/4" NPT \$ 247.90 15-41NFC 3/8" NPT \$ 247.90 15-41NFD 1/2" NPT \$ 297.70 10-41NFF 3/4" NPT \$ 664.20 10-41NFH 1" NPT \$ 952.95		Soft Seat Check Valves 15-41NFB-T 1/4" NPT \$ 255.50 15-41NFC-T 3/8" NPT \$ 255.50 15-41NFD-T 1/2" NPT \$ 258.05 10-41NFF-T 3/4" NPT \$ 682.10 10-41NFH-T 1" NPT \$ 1,082.00 Safety Heads 15-61NMA 1/8" Male NPT \$ 194.25 15-61NMB 1/4" Male NPT \$ 194.25 15-61NMC 3/8" Male NPT \$ 194.25 15-61NMD 1/2" Male NPT \$ 233.90 Hex Nipples 15-21NMANMA 1/8" Male NPT \$ 74.10 15-21NMBNMB 1/4" Male NPT \$ 74.10 15-21NMCNMC 3/8" Male NPT \$ 74.10 15-21NMDNMD 1/2" Male NPT \$ 74.10 10-21NMFNMF 3/4" NPT \$ 120.05 10-21NMHNMH 1" NPT \$ 194.25	
---	--	--	--	---	--

Taper Seal Tubing (Catalog Page 16)

Size	Material	Wall Thickness	Catalog No.	Price/Foot 0-200 Feet	Price/Foot 201-500 Feet	Price/Foot 501+ Feet
1/16" O.D. x .006" I.D.	316 S.S.	.028	15-9A1-006	\$ 11.65	\$ 11.10	\$ 10.50
1/16" O.D. x .030" I.D.	316 S.S.	.016	15-9A1-030	\$ 14.10	\$ 13.40	\$ 12.70
1/8" O.D. x .060" I.D.	316 S.S.	.032	15-9A2	\$ 17.50	\$ 16.65	\$ 15.75
1/8" O.D. x .060" I.D.	Hastelloy-C	.032	15-9A2-HC276	\$ 45.50	\$ 43.25	\$ 40.95
1/4" O.D. x .125" I.D.	316 S.S.	.062	10-9A4-316	\$ 19.40	\$ 18.45	\$ 17.50
3/8" O.D. x .250" I.D.	316 S.S.	.062	10-9A6-316	\$ 27.80	\$ 26.45	\$ 25.05

High Pressure Equipment Company

P.O. Box 8248 - 2955 West 17th St., Ste 6 - Erie, PA 16505 USA - Phone: (814) 838-2028 / (800) 289-7447

www.highpressure.com / Sales@highpressure.com



High Pressure Equipment

A GRACO® Company

Medium Pressure Valves Fittings & Tubing	20-12LF6-R	\$ 435.65	Medium Pressure Bulkhead Couplings	
Medium Pressure Valves (Catalog Page 30)	20-12LF9-R	\$ 525.05	(Catalog Page 33)	
20-11LF4	20-12LF12-R	consult factory	20-21LF4-B	\$ 138.10
20-11LF6	20-12LF16-R	consult factory	20-21LF6-B	\$ 172.60
20-11LF9	10-12LF12-R	consult factory	20-21LF9-B	\$ 221.15
20-11LF12	10-12LF16-R	consult factory	20-21LF12-B	\$ 438.20
20-11LF16			20-21LF16-B	\$ 640.00
10-11LF16			15-21LF24-B	\$ 1,901.95
10-11LF12	Medium Pressure Fittings			
20-12LF4	(Catalog Page 32)		Medium Pressure Caps	
20-12LF6	Elbows		(Catalog Page 33)	
20-12LF9	20-22LF4	\$ 58.85	20-21LF4-C	\$ 48.15
20-12LF12	20-22LF6	\$ 76.75	20-21LF6-C	\$ 54.90
20-12LF16	20-22LF9	\$ 95.90	20-21LF9-C	\$ 68.15
10-12LF12	20-22LF12	\$ 209.55	20-21LF12-C	\$ 98.70
10-12LF16	20-22LF16	\$ 365.35	20-21LF16-C	\$ 131.50
10-12LF16	15-22LF24	\$ 1,626.05	15-21LF24-C	\$ 567.00
10-12LF12	Tees			
10-12LF16	20-23LF4	\$ 76.75	Medium Pressure Line Filters	
20-13LF4	20-23LF6	\$ 89.55	(Catalog Page 34)	
20-13LF6	20-23LF9	\$ 129.10	20-51LF4	\$ 283.55
20-13LF9	20-23LF12	\$ 283.70	20-51LF6	\$ 313.15
20-13LF12	20-23LF16	\$ 430.55	20-51LF9	\$ 462.40
20-13LF16	15-23LF24	\$ 1,905.70	20-51LF12	\$ 1,151.45
10-13LF12	Crosses		20-51LF16	\$ 1,672.30
10-13LF16	20-24LF4	\$ 94.65		
20-14LF4	20-24LF6	\$ 106.20	Medium Pressure Ball Check Valves	
20-14LF6	20-24LF9	\$ 167.45	(Catalog Page 34)	
20-14LF9	20-24LF12	\$ 384.60	20-41LF4	\$ 194.25
20-14LF12	20-24LF16	\$ 583.90	20-41LF6	\$ 204.45
20-14LF16	15-24LF24	\$ 2,285.15	20-41LF9	\$ 277.30
10-14LF12			20-41LF12	\$ 779.15
10-14LF16	Medium Pressure Union Couplings		20-41LF16	\$ 1,236.45
20-15LF4	(Catalog Page 33)		10-41LF16	\$ 1,094.75
20-15LF6	20-21LF4-U	\$ 95.90		
20-15LF9	20-21LF6-U	\$ 106.20	Medium Pressure Soft Seat Check Valves	
20-15LF12	20-21LF9-U	\$ 143.15	(Catalog Page 34)	
20-15LF16	20-21LF12-U	\$ 250.40	20-41LF4-T	\$ 207.00
10-15LF12	20-21LF16-U	\$ 339.85	20-41LF6-T	\$ 224.80
10-15LF16	15-21LF24-U	consult factory	20-41LF9-T	\$ 274.80
20-12LF4-R			20-41LF12-T	\$ 776.65
			20-41LF16-T	\$ 1,184.15
			10-41LF16-T	\$ 1,094.75



High Pressure Equipment

A GRACO® Company

Medium Pressure Safety Heads (Catalog Page 35)		Collet Body		15-LM16-10	\$ 120.05
20-61LM4	\$ 175.20	208768	\$ 43.55	15-LM16-12	\$ 136.80
20-61LM6	\$ 181.50	208771	\$ 37.10	20-LM16-6	\$ 106.20
20-61LM9	\$ 199.35	208774	\$ 53.75	20-LM16-8	\$ 117.55
20-61LM12	\$ 420.35	208777	\$ 61.35	20-LM16-10	\$ 136.80
20-61LM16	\$ 454.80	208780	\$ 85.70	20-LM16-12	\$ 159.85
Medium Pressure Rupture Discs (Catalog Page 36)		Medium Pressure Nipples (316 S.S.) (Catalog Page 38)		15-LM24-6	\$ 309.15
1,500 to 5,000 psi	\$ 62.75	20-LM4-2.75	\$ 20.45	15-LM24-8	\$ 360.25
5,500 to 20,000 psi	\$ 81.80	20-LM4-6	\$ 29.80	15-LM24-10	\$ 380.65
Medium Pressure Anti-Vibration (Catalog Page 37)		20-LM4-8	\$ 30.75	15-LM24-12	\$ 420.35
Gland Assembly		20-LM4-10	\$ 34.60	Medium Pressure Connection Components (Catalog Page 39)	
20-3LM4	\$ 74.10	20-LM4-12	\$ 41.00	Glands	
20-3LM6	\$ 81.85	20-LM6-3	\$ 26.95	20-2LM4	\$ 9.15
20-3LM9	\$ 98.45	20-LM6-6	\$ 35.85	20-2LM6	\$ 12.85
20-3LM12	\$ 112.45	20-LM6-8	\$ 41.00	20-2LM9	\$ 17.95
20-3LM16	\$ 189.15	20-LM6-10	\$ 46.10	20-2LM12	\$ 26.95
Component Parts		20-LM6-12	\$ 53.75	20-2LM16	\$ 42.20
Slotted Collet		20-LM9-4	\$ 41.00	15-2LM24	\$ 144.45
208769	\$ 21.85	20-LM9-6	\$ 52.55	Collars	
208772	\$ 21.85	20-LM9-8	\$ 61.35	20-2L4	\$ 6.55
208775	\$ 48.65	20-LM9-10	\$ 70.35	20-2L6	\$ 7.75
208778	\$ 50.05	20-LM9-12	\$ 80.55	20-2L9	\$ 12.85
208781	\$ 102.25	15-LM12-4	\$ 61.35	20-2L12	\$ 14.25
Collet Gland		15-LM12-6	\$ 63.95	20-2L16	\$ 24.40
208770	\$ 29.50	15-LM12-8	\$ 85.70	15-2L24	\$ 98.45
208773	\$ 30.75	15-LM12-10	\$ 95.90	Plugs	
208776	\$ 21.85	15-LM12-12	\$ 109.95	20-7LM4	\$ 14.25
208779	\$ 30.75	20-LM12-4	\$ 63.95	20-7LM6	\$ 15.35
208782	\$ 37.10	20-LM12-6	\$ 69.00	20-7LM9	\$ 21.85
		20-LM12-8	\$ 90.80	20-7LM12	\$ 32.05
		20-LM12-10	\$ 112.45	20-7LM16	\$ 60.25
		20-LM12-12	\$ 117.55	15-7LM24	\$ 187.90
		15-LM16-6	\$ 93.35		
		15-LM16-8	\$ 106.20		

Medium Pressure Tubing (Catalog Page 38)

Size	Material	Wall Thickness	Catalog No.	Price/Foot 0-200 Feet	Price/Foot 201-500 Feet	Price/Foot 501+ Feet
1/4" O.D. x 0.109" I.D.	316 S.S.	.070	20-9M4-316	\$ 20.90	\$ 19.90	\$ 18.85
3/8" O.D. x 0.203" I.D.	316 S.S.	.086	20-9M6-316	\$ 32.80	\$ 31.20	\$ 29.55
9/16" O.D. x 0.359" I.D.	316 S.S.	.100	15-9M9-316	\$ 46.25	\$ 43.95	\$ 41.65
9/16" O.D. x 0.312" I.D.	316 S.S.	.124	20-9M9-316	\$ 41.60	\$ 39.55	\$ 37.45
3/4" O.D. x 0.516" I.D.	316 S.S.	.117	15-9M12-316	\$ 59.65	\$ 56.70	\$ 53.70
3/4" O.D. x 0.438" I.D.	316 S.S.	.156	20-9M12-316	\$ 61.90	\$ 58.85	\$ 55.75
1" O.D. x 0.688" I.D.	316 S.S.	.156	15-9M16-316	\$ 89.70	\$ 85.25	\$ 80.75
1" O.D. x 0.562" I.D.	316 S.S.	.219	20-9M16-316	\$ 94.90	\$ 90.20	\$ 85.45
1.5" O.D. x 0.938" I.D.	316 S.S.	.281	15-9M24-316	\$ 210.15	\$ 199.65	\$ 189.15

High Pressure Equipment Company

P.O. Box 8248 - 2955 West 17th St., Ste 6 - Erie, PA 16505 USA - Phone: (814) 838-2028 / (800) 289-7447

www.highpressure.com / Sales@highpressure.com



High Pressure Equipment

A GRACO® Company

High Pressure Valves, Fittings & Tubing		High Pressure Valves (Catalog Page 46)		Crosses	
High Pressure Valves (Catalog Page 42)					
30-11HF2	\$ 209.55	60-11HF2	\$ 262.05	60-24HF2	\$ 125.15
30-11HF4	\$ 195.50	60-11HF4	\$ 236.40	60-24HF4	\$ 108.75
30-11HF6	\$ 223.70	60-11HF6	\$ 267.15	60-24HF6	\$ 139.35
30-11HF9	\$ 293.90	60-11HF9	\$ 327.00	60-24HF9	\$ 207.00
30-11HF16	\$ 1,942.85	60-12HF2	\$ 244.55	40-24HF9	\$ 210.90
40-11HF9	\$ 333.50	60-12HF4	\$ 239.00	30-24HF16	\$ 696.20
30-12HF2	\$ 213.45	60-12HF6	\$ 272.20	High Pressure Union Couplings (Catalog Page 49)	
30-12HF4	\$ 195.50	60-12HF9	\$ 328.40	60-21HF2-U	\$ 130.40
30-12HF6	\$ 223.70	60-13HF2	\$ 293.90	60-21HF4-U	\$ 108.75
30-12HF9	\$ 293.90	60-13HF4	\$ 278.50	60-21HF6-U	\$ 139.35
30-12HF16	\$ 2,036.05	60-13HF6	\$ 343.70	60-21HF9-U	\$ 207.00
40-12HF9	\$ 333.50	60-13HF9	\$ 433.10	40-21HF9-U	\$ 210.90
30-13HF2	\$ 270.85	60-14HF2	\$ 296.40	30-21HF16-U	\$ 491.90
30-13HF4	\$ 233.90	60-14HF4	\$ 288.80	High Pressure Bulkhead Couplings (Catalog Page 49)	
30-13HF6	\$ 302.80	60-14HF6	\$ 343.70	60-21HF2-B	\$ 173.75
30-13HF9	\$ 403.75	60-14HF9	\$ 440.75	60-21HF4-B	\$ 120.05
30-13HF16	consult factory	60-15HF2	\$ 442.05	60-21HF6-B	\$ 149.55
40-13HF9	consult factory	60-15HF4	\$ 440.75	60-21HF9-B	\$ 196.80
30-14HF2	\$ 272.20	60-15HF6	\$ 518.65	40-21HF9-B	\$ 207.00
30-14HF4	\$ 235.10	60-15HF9	\$ 641.30	30-21HF16-B	\$ 729.45
30-14HF6	consult factory	60-12HF2-R	consult factory	High Pressure Caps (Catalog Page 49)	
30-14HF9	\$ 405.00	60-12HF4-R	\$ 390.95	60-21HF2-C	\$ 50.05
30-14HF16	consult factory	60-12HF6-R	\$ 440.75	60-21HF4-C	\$ 55.15
40-14HF9	consult factory	60-12HF9-R	\$ 569.70	60-21HF6-C	\$ 84.40
30-15HF2	\$ 362.85	High Pressure Fittings (Catalog Page 48)		60-21HF9-C	\$ 90.80
30-15HF4	\$ 324.45	Elbows		40-21HF9-C	\$ 95.90
30-15HF6	\$ 503.35	60-22HF2	\$ 79.30	30-21HF16-C	\$ 133.00
30-15HF9	\$ 518.65	60-22HF4	\$ 67.85	High Pressure Line Filters (Catalog Page 50)	
30-15HF16	consult factory	60-22HF6	\$ 93.35	60F-51HF2	\$ 299.00
40-15HF9	\$ 669.35	60-22HF9	\$ 133.00	60F-51HF4	\$ 295.10
30-12HF2-R	\$ 327.00	40-22HF9	\$ 138.10	60F-51HF6	\$ 313.15
30-12HF4-R	\$ 336.05	30-22HF16	\$ 407.65	60F-51HF9	\$ 405.00
30-12HF6-R	\$ 405.00	Tees		40F-51HF9	\$ 413.95
30-12HF9-R	\$ 497.00	60-23HF2	\$ 101.10		
30-12HF16-R	consult factory	60-23HF4	\$ 95.90		
40-12HF9-R	\$ 583.90	60-23HF6	\$ 113.85		
		60-23HF9	\$ 177.70		
		40-23HF9	\$ 179.00		
		30-23HF16	\$ 491.90		



High Pressure Equipment

A GRACO® Company

High Pressure Ball Check Valves (Catalog Page 50)	40-63HF9 consult factory		High Pressure Nipples (316 S.S.) (Catalog Page 54)
60-41HF2 \$ 213.45	60-61HF2 \$ 216.00		60-HM2-2 \$ 17.95
60-41HF4 \$ 203.25	60-61HF4 \$ 216.00		60-HM2-3 \$ 19.30
60-41HF6 \$ 258.05	60-61HF6 \$ 218.60		60-HM2-4 \$ 20.45
60-41HF9 \$ 309.15	60-61HF9 \$ 265.75		60-HM2-6 \$ 24.40
40-41HF9 \$ 319.40	40-61HF9 consult factory		60-HM2-9 \$ 28.20
30-41HF16 \$ 1,277.35			60-HM2-12 \$ 32.05
	High Pressure Anti-Vibration (Catalog Page 53)		30-HM2-2 \$ 17.95
High Pressure Soft Seat Check Valves (Catalog Page 50)	Gland Assembly		30-HM2-3 \$ 19.30
30-41HF2-T \$ 220.30	60-3HM4 \$ 33.30		30-HM2-4 \$ 20.45
30-41HF4-T \$ 205.80	60-3HM6 \$ 32.05		30-HM2-6 \$ 24.40
30-41HF6-T \$ 235.10	60-3HM9 \$ 47.35		30-HM2-9 \$ 28.20
30-41HF9-T \$ 274.80			30-HM2-12 \$ 30.75
60-41HF4-T \$ 245.30	Component Parts		60-HM4-2.75-316 \$ 20.45
60-41HF6-T \$ 272.20	Slotted Collet		60-HM4-6-316 \$ 28.20
60-41HF9-T \$ 327.00	208784 \$ 24.40		60-HM4-8-316 \$ 32.05
40-41HF9-T \$ 336.05	208786 \$ 19.30		60-HM4-10-316 \$ 38.45
30-41HF16-T \$ 1,294.00	208788 \$ 20.45		60-HM4-12-316 \$ 43.55
	Collet Gland		60-HM6-3-316 \$ 28.20
High Pressure Excess Surge Check Valves (Catalog Page 51)	208783 \$ 19.30		60-HM6-6-316 \$ 37.10
60-41HF9-E \$ 355.15	208785 \$ 26.95		60-HM6-8-316 \$ 42.20
Bushing 200888 \$ 86.95	208787 \$ 28.20		60-HM6-10-316 \$ 47.35
	Collar		60-HM6-12-316 \$ 53.75
High Pressure Rupture Discs (Catalog Page 51)	60-2H4 \$ 6.55		60-HM9-4-316 \$ 42.20
1,500 to 5,000 psi \$ 62.75	60-2H6 \$ 9.15		60-HM9-6-316 \$ 55.15
5,500 to 65,000 psi \$ 81.70	60-2H9 \$ 11.65		60-HM9-8-316 \$ 60.25
			60-HM9-10-316 \$ 70.35
High Pressure Safety Heads (Catalog Page 52)			60-HM9-12-316 \$ 83.20
60-61HM4 \$ 176.25			40-HM9-4 \$ 46.10
60-61HM6 \$ 176.25			40-HM9-6 \$ 56.25
60-61HM9 \$ 207.00			40-HM9-8 \$ 65.30
40-61HM9 \$ 209.55			40-HM9-10 \$ 75.45
30-61HM16 consult factory			40-HM9-12 \$ 85.70
60-63HF2 \$ 259.50			30-HM16-6 \$ 107.35
60-63HF4 \$ 259.50			30-HM16-8 \$ 122.65
60-63HF6 \$ 260.60			30-HM16-10 \$ 136.80
60-63HF9 \$ 300.20			30-HM16-12 \$ 164.95

High Pressure Equipment Company

P.O. Box 8248 - 2955 West 17th St., Ste 6 - Erie, PA 16505 USA - Phone: (814) 838-2028 / (800) 289-7447

www.highpressure.com / Sales@highpressure.com



High Pressure Equipment

A GRACO® Company

High Pressure Nipples (304 S.S.) (Catalog Page 54)		60-HM9-8-304	\$ 44.85	Collars	
60-HM4-2.75-304	\$ 19.30	60-HM9-10-304	consult factory	60-2H2	\$ 6.55
60-HM4-6-304	\$ 25.65	60-HM9-12-304	consult factory	60-2H4	\$ 6.55
60-HM4-8-304	\$ 32.05			60-2H6	\$ 9.15
60-HM4-10-304	\$ 34.60			60-2H9	\$ 11.65
60-HM4-12-304	\$ 37.10			30-2H16	\$ 26.95
60-HM6-3-304	\$ 25.65	High Pressure Components (Catalog Page 55)		Plugs	
60-HM6-6-304	\$ 35.85	Glands		60-7HM2	\$ 11.65
60-HM6-8-304	consult factory	60-2HM2	\$ 12.85	60-7HM4	\$ 11.65
60-HM6-10-304	\$ 42.20	60-2HM4	\$ 12.85	60-7HM6	\$ 15.35
60-HM6-12-304	consult factory	60-2HM6	\$ 15.35	60-7HM9	\$ 19.30
60-HM9-4-304	\$ 37.10	60-2HM9	\$ 23.00	40-7HM9	\$ 19.30
60-HM9-6-304	consult factory	30-2HM16	\$ 46.10	30-7HM16	\$ 62.75

High Pressure Tubing (Catalog Page 54)

Size	Material	Wall Thickness	Catalog No.	Price/Foot 0-200 Feet	Price/Foot 201-500 Feet	Price/Foot 501+ Feet
1/8" O.D. x .020" I.D.	316 S.S.	.052	60-9H2	\$ 14.40	\$ 13.70	\$ 13.00
1/8" O.D. x .040" I.D.	316 S.S.	.042	30-9H2	\$ 14.10	\$ 13.40	\$ 12.70
1/4" O.D. x .083" I.D.	316 S.S.	.083	60-9H4-316	\$ 21.75	\$ 20.70	\$ 19.60
1/4" O.D. x .083" I.D.	304 S.S.	.083	60-9H4-304	\$ 16.70	\$ 15.90	\$ 15.05
1/4" O.D. x .083" I.D.	HC276	.083	60-9H4-HC276	\$ 77.70	\$ 73.85	\$ 69.95
3/8" O.D. x .125" I.D.	316 S.S.	.125	60-9H6-316	\$ 31.35	\$ 29.80	\$ 28.25
3/8" O.D. x .125" I.D.	304 S.S.	.125	60-9H6-304	\$ 24.00	\$ 22.80	\$ 21.60
9/16" O.D. x .250" I.D.	316 S.S.	.155	40-9H9-316	\$ 44.25	\$ 42.05	\$ 39.85
9/16" O.D. x .188" I.D.	316 S.S.	.154	60-9H9-316	\$ 55.20	\$ 52.45	\$ 49.70
9/16" O.D. x .188" I.D.	316 SGS	.154	60-9H9-316-SGS	\$ 57.55	\$ 54.70	\$ 51.80
9/16" O.D. x .188" I.D.	304 S.S.	.154	60-9H9-304	\$ 38.95	\$ 37.05	\$ 35.10
1" O.D. x .437" I.D.	316 S.S.	.281	30-9H16-316	\$ 94.90	\$ 90.20	\$ 85.45



High Pressure Equipment

A GRACO® Company

<p>Ultra High Pressure Valves, Fittings & Tubing</p> <p>Ultra High Pressure Valves (Catalog Pages 58)</p> <table border="0"> <tr><td>100-11XF4</td><td>\$ 800.95</td></tr> <tr><td>100-12XF4</td><td>\$ 800.95</td></tr> <tr><td>100-13XF4</td><td>\$ 951.70</td></tr> <tr><td>100-14XF4</td><td>\$ 951.70</td></tr> <tr><td>100-15XF4</td><td>consult factory</td></tr> <tr><td>100-12XF4-R</td><td>consult factory</td></tr> <tr><td>100-11UF6</td><td>\$ 912.05</td></tr> <tr><td>100-12UF6</td><td>consult factory</td></tr> <tr><td>100-13UF6</td><td>consult factory</td></tr> <tr><td>100-14UF6</td><td>consult factory</td></tr> <tr><td>100-11UF9</td><td>consult factory</td></tr> <tr><td>100-12UF9</td><td>consult factory</td></tr> <tr><td>100-13UF9</td><td>consult factory</td></tr> <tr><td>100-14UF9</td><td>consult factory</td></tr> <tr><td>150-11XF6</td><td>\$ 1,000.20</td></tr> <tr><td>150-12XF6</td><td>\$ 1,000.20</td></tr> <tr><td>150-13XF6</td><td>\$ 1,125.45</td></tr> <tr><td>150-14XF6</td><td>\$ 1,133.10</td></tr> <tr><td>150-15XF6</td><td>consult factory</td></tr> <tr><td>150-12XF6-R</td><td>\$ 1,342.60</td></tr> </table> <p>Ultra High Pressure Check Valves (Catalog Page 59)</p> <table border="0"> <tr><td>100-41XF4</td><td>\$ 503.35</td></tr> <tr><td>100-41UF6</td><td>\$ 577.35</td></tr> <tr><td>100-41UF9</td><td>consult factory</td></tr> <tr><td>150-41XF6</td><td>\$ 846.95</td></tr> </table> <p>Ultra High Pressure Safety Heads</p> <table border="0"> <tr><td>100-61XF4</td><td>\$ 854.60</td></tr> <tr><td>150-61XF6</td><td>consult factory</td></tr> </table>	100-11XF4	\$ 800.95	100-12XF4	\$ 800.95	100-13XF4	\$ 951.70	100-14XF4	\$ 951.70	100-15XF4	consult factory	100-12XF4-R	consult factory	100-11UF6	\$ 912.05	100-12UF6	consult factory	100-13UF6	consult factory	100-14UF6	consult factory	100-11UF9	consult factory	100-12UF9	consult factory	100-13UF9	consult factory	100-14UF9	consult factory	150-11XF6	\$ 1,000.20	150-12XF6	\$ 1,000.20	150-13XF6	\$ 1,125.45	150-14XF6	\$ 1,133.10	150-15XF6	consult factory	150-12XF6-R	\$ 1,342.60	100-41XF4	\$ 503.35	100-41UF6	\$ 577.35	100-41UF9	consult factory	150-41XF6	\$ 846.95	100-61XF4	\$ 854.60	150-61XF6	consult factory	<p>Ultra High Pressure Fittings (Catalog Page 59)</p> <p>Elbows</p> <table border="0"> <tr><td>100-22XF4</td><td>\$ 189.15</td></tr> <tr><td>10-22UF6</td><td>consult factory</td></tr> <tr><td>10-22UF9</td><td>consult factory</td></tr> <tr><td>150-22XF6</td><td>\$ 260.60</td></tr> </table> <p>Tees</p> <table border="0"> <tr><td>100-23XF4</td><td>\$ 258.05</td></tr> <tr><td>100-23UF6</td><td>\$ 341.10</td></tr> <tr><td>100-23UF9</td><td>\$ 427.30</td></tr> <tr><td>150-23XF6</td><td>\$ 341.10</td></tr> </table> <p>Crosses</p> <table border="0"> <tr><td>100-24XF4</td><td>\$ 295.10</td></tr> <tr><td>100-24UF6</td><td>consult factory</td></tr> <tr><td>100-24UF9</td><td>consult factory</td></tr> <tr><td>150-24XF6</td><td>\$ 370.45</td></tr> </table> <p>Bulkheads</p> <table border="0"> <tr><td>100-21XF4-B</td><td>\$ 277.30</td></tr> <tr><td>100-21UF6-B</td><td>consult factory</td></tr> <tr><td>100-21UF9-B</td><td>consult factory</td></tr> <tr><td>150-21XF6-B</td><td>\$ 370.45</td></tr> </table> <p>Caps</p> <table border="0"> <tr><td>100-21XF4-C</td><td>\$ 52.55</td></tr> <tr><td>100-21UF6-C</td><td>consult factory</td></tr> <tr><td>100-21UF9-C</td><td>consult factory</td></tr> <tr><td>150-21XF6-C</td><td>consult factory</td></tr> </table> <p>Ultra High Pressure Nipples (316 S.S.) (Catalog Page 60)</p> <table border="0"> <tr><td>100-XM4-2.75-316</td><td>\$ 27.05</td></tr> <tr><td>100-XM4-6-316</td><td>\$ 34.60</td></tr> <tr><td>100-XM4-8-316</td><td>\$ 38.45</td></tr> <tr><td>100-XM4-10-316</td><td>\$ 41.00</td></tr> <tr><td>100-XM4-12-316</td><td>\$ 43.55</td></tr> </table>	100-22XF4	\$ 189.15	10-22UF6	consult factory	10-22UF9	consult factory	150-22XF6	\$ 260.60	100-23XF4	\$ 258.05	100-23UF6	\$ 341.10	100-23UF9	\$ 427.30	150-23XF6	\$ 341.10	100-24XF4	\$ 295.10	100-24UF6	consult factory	100-24UF9	consult factory	150-24XF6	\$ 370.45	100-21XF4-B	\$ 277.30	100-21UF6-B	consult factory	100-21UF9-B	consult factory	150-21XF6-B	\$ 370.45	100-21XF4-C	\$ 52.55	100-21UF6-C	consult factory	100-21UF9-C	consult factory	150-21XF6-C	consult factory	100-XM4-2.75-316	\$ 27.05	100-XM4-6-316	\$ 34.60	100-XM4-8-316	\$ 38.45	100-XM4-10-316	\$ 41.00	100-XM4-12-316	\$ 43.55	<p>Ultra High Pressure Nipples (304 S.S.) (Catalog Page 60)</p> <table border="0"> <tr><td>100-XM4-2.75-304</td><td>\$ 27.05</td></tr> <tr><td>100-XM4-6-304</td><td>\$ 50.50</td></tr> <tr><td>100-XM4-8-304</td><td>\$ 34.60</td></tr> <tr><td>100-XM4-10-304</td><td>\$ 59.00</td></tr> <tr><td>100-XM4-12-304</td><td>\$ 63.25</td></tr> <tr><td>150-XM6-4-304</td><td>\$ 48.65</td></tr> <tr><td>150-XM6-6-304</td><td>\$ 58.85</td></tr> <tr><td>150-XM6-8-304</td><td>\$ 70.35</td></tr> <tr><td>150-XM6-10-304</td><td>\$ 83.20</td></tr> <tr><td>150-XM6-12-304</td><td>\$ 93.35</td></tr> </table> <p>Ultra High Pressure Connection Components (Catalog Page 61)</p> <p>Glands</p> <table border="0"> <tr><td>100-2XM4</td><td>\$ 17.95</td></tr> <tr><td>100-2UM6</td><td>\$ 29.00</td></tr> <tr><td>100-2UM9</td><td>\$ 32.05</td></tr> <tr><td>150-2XM6</td><td>\$ 23.00</td></tr> </table> <p>Collars</p> <table border="0"> <tr><td>100-2X4</td><td>\$ 10.25</td></tr> <tr><td>100-2U6</td><td>\$ 19.30</td></tr> <tr><td>100-2U9</td><td>\$ 24.40</td></tr> <tr><td>150-2X6</td><td>\$ 14.25</td></tr> </table> <p>Plugs</p> <table border="0"> <tr><td>100-7XM4</td><td>\$ 20.45</td></tr> <tr><td>100-7UM6</td><td>consult factory</td></tr> <tr><td>100-7UM9</td><td>consult factory</td></tr> <tr><td>150-7XM6</td><td>\$ 25.65</td></tr> </table>	100-XM4-2.75-304	\$ 27.05	100-XM4-6-304	\$ 50.50	100-XM4-8-304	\$ 34.60	100-XM4-10-304	\$ 59.00	100-XM4-12-304	\$ 63.25	150-XM6-4-304	\$ 48.65	150-XM6-6-304	\$ 58.85	150-XM6-8-304	\$ 70.35	150-XM6-10-304	\$ 83.20	150-XM6-12-304	\$ 93.35	100-2XM4	\$ 17.95	100-2UM6	\$ 29.00	100-2UM9	\$ 32.05	150-2XM6	\$ 23.00	100-2X4	\$ 10.25	100-2U6	\$ 19.30	100-2U9	\$ 24.40	150-2X6	\$ 14.25	100-7XM4	\$ 20.45	100-7UM6	consult factory	100-7UM9	consult factory	150-7XM6	\$ 25.65
100-11XF4	\$ 800.95																																																																																																																																																			
100-12XF4	\$ 800.95																																																																																																																																																			
100-13XF4	\$ 951.70																																																																																																																																																			
100-14XF4	\$ 951.70																																																																																																																																																			
100-15XF4	consult factory																																																																																																																																																			
100-12XF4-R	consult factory																																																																																																																																																			
100-11UF6	\$ 912.05																																																																																																																																																			
100-12UF6	consult factory																																																																																																																																																			
100-13UF6	consult factory																																																																																																																																																			
100-14UF6	consult factory																																																																																																																																																			
100-11UF9	consult factory																																																																																																																																																			
100-12UF9	consult factory																																																																																																																																																			
100-13UF9	consult factory																																																																																																																																																			
100-14UF9	consult factory																																																																																																																																																			
150-11XF6	\$ 1,000.20																																																																																																																																																			
150-12XF6	\$ 1,000.20																																																																																																																																																			
150-13XF6	\$ 1,125.45																																																																																																																																																			
150-14XF6	\$ 1,133.10																																																																																																																																																			
150-15XF6	consult factory																																																																																																																																																			
150-12XF6-R	\$ 1,342.60																																																																																																																																																			
100-41XF4	\$ 503.35																																																																																																																																																			
100-41UF6	\$ 577.35																																																																																																																																																			
100-41UF9	consult factory																																																																																																																																																			
150-41XF6	\$ 846.95																																																																																																																																																			
100-61XF4	\$ 854.60																																																																																																																																																			
150-61XF6	consult factory																																																																																																																																																			
100-22XF4	\$ 189.15																																																																																																																																																			
10-22UF6	consult factory																																																																																																																																																			
10-22UF9	consult factory																																																																																																																																																			
150-22XF6	\$ 260.60																																																																																																																																																			
100-23XF4	\$ 258.05																																																																																																																																																			
100-23UF6	\$ 341.10																																																																																																																																																			
100-23UF9	\$ 427.30																																																																																																																																																			
150-23XF6	\$ 341.10																																																																																																																																																			
100-24XF4	\$ 295.10																																																																																																																																																			
100-24UF6	consult factory																																																																																																																																																			
100-24UF9	consult factory																																																																																																																																																			
150-24XF6	\$ 370.45																																																																																																																																																			
100-21XF4-B	\$ 277.30																																																																																																																																																			
100-21UF6-B	consult factory																																																																																																																																																			
100-21UF9-B	consult factory																																																																																																																																																			
150-21XF6-B	\$ 370.45																																																																																																																																																			
100-21XF4-C	\$ 52.55																																																																																																																																																			
100-21UF6-C	consult factory																																																																																																																																																			
100-21UF9-C	consult factory																																																																																																																																																			
150-21XF6-C	consult factory																																																																																																																																																			
100-XM4-2.75-316	\$ 27.05																																																																																																																																																			
100-XM4-6-316	\$ 34.60																																																																																																																																																			
100-XM4-8-316	\$ 38.45																																																																																																																																																			
100-XM4-10-316	\$ 41.00																																																																																																																																																			
100-XM4-12-316	\$ 43.55																																																																																																																																																			
100-XM4-2.75-304	\$ 27.05																																																																																																																																																			
100-XM4-6-304	\$ 50.50																																																																																																																																																			
100-XM4-8-304	\$ 34.60																																																																																																																																																			
100-XM4-10-304	\$ 59.00																																																																																																																																																			
100-XM4-12-304	\$ 63.25																																																																																																																																																			
150-XM6-4-304	\$ 48.65																																																																																																																																																			
150-XM6-6-304	\$ 58.85																																																																																																																																																			
150-XM6-8-304	\$ 70.35																																																																																																																																																			
150-XM6-10-304	\$ 83.20																																																																																																																																																			
150-XM6-12-304	\$ 93.35																																																																																																																																																			
100-2XM4	\$ 17.95																																																																																																																																																			
100-2UM6	\$ 29.00																																																																																																																																																			
100-2UM9	\$ 32.05																																																																																																																																																			
150-2XM6	\$ 23.00																																																																																																																																																			
100-2X4	\$ 10.25																																																																																																																																																			
100-2U6	\$ 19.30																																																																																																																																																			
100-2U9	\$ 24.40																																																																																																																																																			
150-2X6	\$ 14.25																																																																																																																																																			
100-7XM4	\$ 20.45																																																																																																																																																			
100-7UM6	consult factory																																																																																																																																																			
100-7UM9	consult factory																																																																																																																																																			
150-7XM6	\$ 25.65																																																																																																																																																			

Ultra High Pressure Tubing (Catalog Page 60)

Size	Material	Wall Thickness	Catalog No.	Price/Foot 0-200 Feet	Price/Foot 201-500 Feet	Price/Foot 501+ Feet
1/4" O.D. x .0625" I.D.	316 S.S.	.094	100-9X4-316	\$ 25.60	\$ 24.35	\$ 23.05
1/4" O.D. x .0625" I.D.	304 S.S.	.094	100-9X4-304	\$ 21.95	\$ 20.90	\$ 19.80
3/8" O.D. x .0625" I.D.	304 S.S.	.156	150-9X6	\$ 50.60	\$ 48.10	\$ 45.55

High Pressure Equipment Company

P.O. Box 8248 - 2955 West 17th St., Ste 6 - Erie, PA 16505 USA - Phone: (814) 838-2028 / (800) 289-7447

www.highpressure.com / Sales@highpressure.com



High Pressure Equipment

A GRACO® Company

Specialty Valves		.500 Orifice		Trunnion Style Three Way Ball Valves	
Two Way Ball Valves		10-80LF12	\$ 1,913.35	(Catalog Page 72)	
(Catalog Page 70)		10-80LF16	\$ 1,913.35	.375 Orifice (90°)	
15-16AF1	\$ 416.45	10-80NFF	\$ 1,913.35	10-76AF6	consult factory
15-16AF2	\$ 426.65	10-80NFH	\$ 1,913.35	15-76LF9	\$ 749.85
10-16AF4	\$ 439.55	Trunnion Style Three Way Ball Valves			
10-16AF6	\$ 439.55	(Catalog Page 72)			
20-16LF4	\$ 424.10	.187 Orifice (90°)			
20-16LF6	\$ 426.65	15-73AF1	\$ 566.00	15-76LF12	\$ 749.85
20-16LF9	\$ 439.55	15-73AF2	\$ 566.00	15-76LF16	\$ 749.85
20-16HF2	consult factory	10-73AF4	\$ 566.00	15-76NFB	\$ 749.85
20-16HF4	\$ 424.10	10-73AF6	consult factory	15-76NFC	\$ 749.85
20-16HF6	consult factory	20-73LF4	\$ 566.00	15-76NFD	\$ 749.85
20-16HF9	\$ 442.05	20-73LF6	\$ 566.00	.500 Orifice (90°)	
15-16NFA	\$ 369.30	20-73LF9	\$ 566.00	10-82LF12	consult factory
15-16NFB	\$ 369.30	20-73HF4	\$ 566.00	10-82LF16	consult factory
15-16NFC	\$ 369.30	20-73HF6	\$ 566.00	10-82NFF	\$ 2,064.10
15-16NFD	\$ 369.30	20-73HF9	\$ 566.00	10-82NFH	\$ 2,064.10
Trunnion Style Two Way Ball Valves		20-73HF9	consult factory	.375 Orifice (180°)	
(Catalog Page 71)		15-73NFA	consult factory	10-75AF6	\$ 749.85
.187 Orifice		15-73NFB	\$ 566.00	15-75LF9	\$ 749.85
15-71AF1	consult factory	15-73NFC	\$ 566.00	15-75LF12	\$ 749.85
15-71AF2	\$ 516.05	.187 Orifice (180°)			
10-71AF4	consult factory	15-72AF1	\$ 566.00	15-75LF16	\$ 749.85
10-71AF6	\$ 516.05	15-72AF2	\$ 566.00	15-75NFB	\$ 749.85
20-71LF4	\$ 516.05	10-72AF4	\$ 566.00	15-75NFC	\$ 749.85
20-71LF6	\$ 516.05	10-72AF6	consult factory	15-75NFD	\$ 749.85
20-71LF9	\$ 516.05	20-72LF4	\$ 566.00	.500 Orifice (180°)	
20-71HF4	\$ 516.05	20-72LF6	\$ 566.00	10-81LF12	\$ 1,984.70
20-71HF6	\$ 516.05	20-72LF9	\$ 566.00	10-81LF16	consult factory
20-71HF9	\$ 516.05	20-72HF4	\$ 566.00	10-81NFF	consult factory
15-71NFA	consult factory	20-72HF6	consult factory	10-81NFH	\$ 2,064.10
15-71NFB	\$ 516.05	20-72HF9	consult factory	Mini Three Way Ball Valves	
15-71NFC	\$ 516.05	15-72NFA	\$ 566.00	10-77LF4	consult factory
0.375 Orifice		15-72NFB	\$ 566.00	10-77LF6	consult factory
10-74AF6	\$ 732.00	15-72NFC	\$ 566.00	10-77LF9	consult factory
15-74LF9	\$ 732.00	High Temperature Valves			
15-74LF12	\$ 732.00	(Suffix "HT")			
15-74LF16	\$ 732.00	Add to price of valves in the \$ 327.00			
15-74NFB	\$ 732.00	20,000 and 30,000 psi series			
15-74NFC	\$ 732.00	Except HF16, LF12 and LF16 \$ 698.75			
15-74NFD	\$ 732.00	series add to price of valves			

High Pressure Equipment Company

P.O. Box 8248 - 2955 West 17th St., Ste 6 - Erie, PA 16505 USA - Phone: (814) 838-2028 / (800) 289-7447

www.highpressure.com / Sales@highpressure.com



High Pressure Equipment

A GRACO® Company

<p>Micro Control Metering Valves (Suffix "V")</p> <p>Add to price of \$ 441.70 standard 60,000 psi series.</p> <p>Metering Tip Valve (Suffix "MTS")</p> <p>Add to price of consult factory standard 60,000 psi series.</p> <p>Relief Valves (Catalog Page 78)</p> <p>602923 (SoftSeat) \$ 1,065.30 402633 \$ 1,040.60 HiP-10RV \$ 462.45 HiP-20RV \$ 904.40</p> <p>Male Bottom Connection Valves</p> <p>2-7928A consult factory 2-8144A consult factory 2-7602A consult factory 2-7569A consult factory 15-12NMAAF2 \$ 265.75 15-12NMBAF2 \$ 265.75 2-7565A consult factory 2-7927A consult factory 2-8039A consult factory 2-7604A consult factory 2-7603A consult factory</p> <p>*Rupture Discs (when required) should be ordered separately.</p> <p>Block and Bleed Needle Valves</p> <p>15-SBB-NFB \$ 638.80 15-SBB-NFC \$ 696.20 15-SBB-NFD \$ 715.35 20-SBB-LF4 \$ 659.10 20-SBB-LF6 \$ 687.20 20-SBB-LF9 \$ 724.35</p>	<p>Double Block and Bleed Needle Valves</p> <p>20-DBB-LF4 \$ 1,198.05 20-DBB-LF6 \$ 1,232.75 20-DBB-LF9 \$ 1,324.60 20-DBB-LF12 \$ 2,421.50 20-DBB-LF16 \$ 2,406.35 15-DBB-BV-LF6 \$ 4,761.20 15-DBB-BV-LF9 \$ 4,622.50 15-DBB-BV-LF12 \$ 4,761.20 15-DBB-BV-NFB \$ 4,761.20 15-DBB-BV-NFC \$ 4,761.20 15-DBB-BV-NFD \$ 4,761.20</p> <p>Air Operated Valves Hippo Air Actuators (Catalog Pages 63)</p> <p>Mini Hippo Normally Open \$ 574.75 Mini Hippo Normally Closed \$ 615.60 MPO-NO Normally Open \$ 821.45 MPO-NC Normally Closed \$ 866.00 HPO-NO Normally Open \$ 1,159.80 HPO-NC Normally Closed \$ 1,177.65 EHPO-NO Normally Open \$ 5,572.80 EHPO-NC Normally Closed \$ 5,572.80</p> <p>Hipco Air & Ball Valve Operators (Catalog Page 64)</p> <p>Add the following to price of a standard valve.</p> <p>Normally Open \$ 638.70 Normally Closed \$ 677.00 TSR4 Ball Valve \$ 751.10 TDR4 Ball Valve \$ 751.10 TSR8 Ball Valve \$ 751.10 TDA8 Ball Valve \$ 751.10 TSR20 Ball Valve \$ 1,232.65</p>	<p>Remarco Valves (Catalog Page 65)</p> <p>D-20R-12LF9R \$ 2,041.10 D-30R-12HF4R \$ 1,444.75 D-30R-12HF6R \$ 1,444.75 D-30R-12HF9R \$ 1,444.75 D-10R-12LF9R \$ 1,444.75 D-60R-12HF4R \$ 1,444.75 D-60R-12HF6R \$ 1,444.75 D-60R-12HF9R \$ 1,535.35 D-100R-12XF4R \$ 1,882.75 D-100R-12XF6R \$ 1,917.30 SD-20R-12LF9R \$ 2,270.95 SD-30R-12HF4R \$ 1,677.10 SD-30R-12HF6R \$ 1,677.10 SD-30R-12HF9R \$ 1,774.20 SD-10R-12LF9R \$ 1,774.20 SD-60R-12HF4R \$ 1,677.10 SD-60R-12HF6R \$ 1,677.10 SD-60R-12HF9R \$ 1,774.20 SD-100R-12XF4R \$ 2,111.45 SD-100R-12XF6R \$ 2,145.90</p> <p>Remetco Valves (Catalog Page 67)</p> <p>10M-12HF9R \$ 6,151.25 30M-12HF9R \$ 6,151.25 60M-12HF9R \$ 6,151.25 (Remote Valve Panel) - RVP \$ 1,078.05</p>
--	---	---

High Pressure Equipment Company

P.O. Box 8248 - 2955 West 17th St., Ste 6 - Erie, PA 16505 USA - Phone: (814) 838-2028 / (800) 289-7447

www.highpressure.com / Sales@highpressure.com



High Pressure Equipment

A GRACO® Company

Accessories		10-21AF4NMB	\$ 62.75	20-21LF12HM4	\$ 177.70
Adapters: Female to Male		10-21AF4NMC	\$ 62.75	20-21LF12HM6	\$ 196.80
(Catalog Page 98)		10-21AF4NMD	\$ 62.75	20-21LF12HM9	\$ 210.90
15-21AF1AM1	\$ 89.55	10-21AF4NMF	consult factory	20-21LF16HM4	\$ 245.30
15-21AF1AM2	\$ 89.55	10-21AF4NMH	\$ 122.90	20-21LF16HM6	\$ 229.00
10-21AF1AM4	\$ 89.55	10-21AF6NMA	\$ 65.30	20-21LF16HM9	\$ 256.95
10-21AF1AM6	\$ 109.95	10-21AF6NMB	\$ 65.30	20-21HF2LM4	\$ 70.35
15-21AF2AM1	\$ 86.95	10-21AF6NMC	\$ 65.30	20-21HF4LM4	\$ 70.35
10-21AF2AM4	\$ 98.45	10-21AF6NMD	\$ 65.30	20-21HF4LM6	\$ 72.95
10-21AF2AM6	\$ 109.95	10-21AF6NMF	\$ 103.65	20-21HF4LM9	\$ 75.45
10-21AF4AM2	\$ 103.65	10-21AF6NMH	\$ 131.70	20-21HF6LM4	\$ 83.20
10-21AF4AM6	\$ 103.65	20-21LF4LM6	\$ 69.00	20-21HF6LM6	\$ 83.20
10-21AF6AM2	\$ 108.75	20-21LF4LM9	\$ 71.55	20-21HF6LM9	\$ 88.25
10-21AF6AM4	\$ 106.20	20-21LF6LM4	\$ 75.45	20-21HF9LM4	\$ 93.35
15-21AF1HM2	\$ 94.65	20-21LF6LM6	\$ 107.35	20-21HF9LM6	\$ 93.35
15-21AF1HM4	\$ 94.65	20-21LF6LM9	\$ 80.55	20-21HF9LM9	\$ 98.45
15-21AF1HM6	\$ 116.35	20-21LF9LM4	\$ 85.70	20-21HF4LM12	\$ 152.20
15-21AF1HM9	\$ 152.20	20-21LF9LM6	\$ 85.70	20-21HF6LM12	\$ 193.00
15-21AF2HM2	\$ 99.75	20-21LF9LM9	\$ 161.00	20-21HF9LM12	\$ 219.70
15-21AF2HM4	\$ 99.75	20-21LF12LM4	\$ 177.70	20-21HF4LM16	\$ 200.60
15-21AF2HM6	\$ 106.20	20-21LF12LM6	\$ 200.60	20-21HF6LM16	\$ 230.10
15-21AF2HM9	\$ 106.20	20-21LF12LM9	\$ 209.55	20-21HF9LM16	\$ 212.05
10-21AF4HM2	\$ 74.10	20-21LF12LM16	\$ 219.70	30-21HF4HM16	\$ 235.10
10-21AF4HM4	\$ 70.35	20-21LF4LM12	\$ 152.20	30-21HF6HM16	\$ 250.40
10-21AF4HM6	\$ 74.10	20-21LF6LM12	\$ 148.25	30-21HF9HM16	\$ 240.20
10-21AF4HM9	\$ 86.95	20-21LF9LM12	\$ 157.25	20-21LF4NMA	\$ 70.35
10-21AF6HM2	\$ 82.35	20-21LF16LM4	\$ 201.90	20-21LF4NMB	\$ 56.25
10-21AF6HM4	\$ 78.05	20-21LF16LM6	\$ 214.65	20-21LF4NMC	\$ 58.85
10-21AF6HM6	\$ 79.30	20-21LF16LM9	\$ 245.30	20-21LF4NMD	\$ 60.25
10-21AF6HM9	\$ 94.65	20-21LF16LM12	\$ 224.80	10-21LF4NMF	\$ 117.55
10-21XF6AM4	consult factory	20-21LF4LM16	\$ 161.00	10-21LF4NMH	\$ 127.90
15-21AF1NMA	\$ 66.45	20-21LF6LM16	\$ 210.90	20-21LF6NMA	\$ 70.35
15-21AF1NMB	\$ 66.45	20-21LF9LM16	\$ 214.65	20-21LF6NMB	\$ 60.25
15-21AF1NMC	\$ 66.45	20-21LF4HM2	\$ 65.30	20-21LF6NMC	\$ 65.30
15-21AF1NMD	\$ 66.45	20-21LF4HM4	\$ 75.45	20-21LF6NMD	\$ 67.85
10-21AF1NMF	\$ 102.25	20-21LF4HM6	\$ 75.45	10-21LF6NMF	\$ 120.05
10-21AF1NMH	\$ 185.30	20-21LF4HM9	\$ 78.05	10-21LF6NMH	\$ 124.05
15-21AF2NMA	\$ 66.45	20-21LF4HM16	\$ 127.65	20-21LF9NMA	\$ 93.35
15-21AF2NMB	\$ 66.45	20-21LF6HM4	\$ 69.00	20-21LF9NMB	\$ 85.70
15-21AF2NMC	\$ 66.45	20-21LF6HM6	\$ 85.70	20-21LF9NMC	\$ 88.25
15-21AF2NMD	\$ 66.45	20-21LF6HM9	\$ 89.55	20-21LF9NMD	\$ 89.55
10-21AF2NMF	\$ 100.60	20-21LF9HM4	\$ 86.95	10-21LF9NMF	\$ 102.25
10-21AF2NMH	\$ 126.55	20-21LF9HM6	\$ 88.25	10-21LF9NMH	\$ 115.00
10-21AF4NMA	\$ 62.75	20-21LF9HM9	\$ 88.25	20-21LF12NMA	\$ 192.25
		20-21LF9XM4	consult factory		

High Pressure Equipment Company

P.O. Box 8248 - 2955 West 17th St., Ste 6 - Erie, PA 16505 USA - Phone: (814) 838-2028 / (800) 289-7447

www.highpressure.com / Sales@highpressure.com



High Pressure Equipment

A GRACO® Company

20-21LF12NMB	\$ 198.05	10-21HF2NMF	\$ 136.80	60-21HF6HM2	\$ 72.95
20-21LF12NMC	\$ 193.00	10-21HF2NMH	consult factory	60-21HF6HM4	\$ 78.05
20-21LF12NMD	\$ 171.15	30-21HF4NMA	\$ 56.25	60-21HF6HM9	\$ 89.55
10-21LF12NMF	\$ 200.60	30-21HF4NMB	\$ 56.25	60-21HF9HM2	\$ 109.95
10-21LF12NMH	\$ 214.65	30-21HF4NMC	\$ 57.65	60-21HF9HM4	\$ 95.90
20-21LF16NMA	consult factory	30-21HF4NMD	\$ 61.35	60-21HF9HM6	\$ 95.90
20-21LF16NMB	\$ 255.50	10-21HF4NMF	\$ 109.95	60-21HF9HM9	\$ 164.95
20-21LF16NMC	\$ 230.10	10-21HF4NMH	\$ 159.85	60-21HF4XM6	\$ 135.50
20-21LF16NMD	\$ 230.10	30-21HF6NMA	\$ 70.35	60-21HF2XM4	\$ 122.65
10-21LF16NMF	\$ 222.25	30-21HF6NMB	\$ 65.30	60-21XF6HM4	\$ 135.50
10-21LF16NMH	\$ 240.20	30-21HF6NMC	\$ 72.95	100-21XF4XM6	\$ 171.15
20-21NFALM4	\$ 83.20	30-21HF6NMD	\$ 72.95	100-21XF6XM4	\$ 136.80
20-21NFBLM4	\$ 53.75	10-21HF6NMF	\$ 109.95	15-21HF4AM2	\$ 97.15
20-21NFCLM4	\$ 69.00	10-21HF6NMH	\$ 148.25	15-21LF4AM2	\$ 78.05
20-21NFDLM4	\$ 72.95	30-21HF9NMA	\$ 109.95	10-21LF4AM4	\$ 81.85
10-21NFFLM4	\$ 147.00	30-21HF9NMB	\$ 98.45	10-21LF4AM6	\$ 81.85
20-21NFALM6	\$ 83.20	30-21HF9NMC	\$ 98.45	15-21LF6AM2	\$ 79.45
20-21NFBLM6	\$ 69.00	30-21HF9NMD	\$ 98.45	10-21LF6AM4	\$ 84.40
20-21NFCLM6	\$ 70.35	10-21HF9NMF	\$ 120.05	10-21LF6AM6	consult factory
20-21NFDLM6	\$ 74.10	10-21HF9NMH	\$ 159.85	15-21LF9AM2	\$ 90.80
10-21NFFLM6	\$ 149.55	30-21NFAHM2	\$ 67.85	10-21LF9AM4	\$ 90.60
10-21NFHLM6	\$ 176.25	30-21NFBHM2	\$ 67.85	10-21LF9AM6	\$ 93.35
20-21NFALM9	\$ 83.20	30-21NFCBM2	\$ 67.85	15-21AF1LM4	\$ 84.40
20-21NFBLM9	\$ 67.85	30-21NFAHM4	\$ 48.65	15-21AF1LM6	\$ 92.10
20-21NFCLM9	\$ 70.35	30-21NFBHM4	\$ 52.55	15-21AF1LM9	\$ 98.45
20-21NFDLM9	\$ 72.95	30-21NFCBM4	\$ 61.35	15-21AF2LM4	\$ 93.35
10-21NFFLM9	\$ 147.00	30-21NFDHM4	\$ 63.95	15-21AF2LM6	\$ 97.15
10-21NFHLM9	\$ 177.70	30-21NFAHM6	\$ 70.35	15-21AF2LM9	\$ 109.95
20-21NFALM12	consult factory	30-21NFBHM6	\$ 52.55	10-21AF4LM4	\$ 103.65
20-21NFBLM12	\$ 186.60	30-21NFCBM6	\$ 62.75	10-21AF4LM6	\$ 108.75
20-21NFCLM12	\$ 182.80	30-21NFDHM6	\$ 71.55	10-21AF4LM9	\$ 122.65
20-21NFDLM12	\$ 157.25	10-21NFFHM6	\$ 120.05	10-21AF6LM4	\$ 106.20
10-21NFFLM12	\$ 213.45	30-21NFAHM9	\$ 72.95	10-21AF6LM6	\$ 111.25
10-21NFHLM12	\$ 222.25	30-21NFBHM9	\$ 69.00	10-21AF6LM9	\$ 125.15
20-21NFALM16	\$ 224.80	30-21NFCBM9	\$ 71.55	15-21NFAAM2	\$ 76.75
20-21NFBLM16	\$ 224.80	30-21NFDHM9	\$ 70.35	15-21NFBAM2	\$ 76.75
20-21NFCLM16	\$ 208.35	10-21NFFHM9	\$ 117.55	15-21NFCAM2	\$ 76.75
20-21NFDLM16	\$ 166.05	10-21NFHBM9	\$ 161.00	10-21NFAAM4	\$ 63.95
10-21NFFLM16	\$ 241.50	30-21NFBXM4	\$ 98.45	10-21NFBAM4	\$ 63.95
10-21NFHLM16	\$ 245.30	60-21HF2HM4	\$ 63.95	10-21NFCAM4	\$ 70.35
30-21HF2NMA	\$ 83.20	60-21HF2HM6	\$ 63.95	10-21NFDAM4	\$ 75.45
30-21HF2NMB	\$ 83.20	60-21HF2HM9	\$ 85.70	10-21NFAAM6	consult factory
30-21HF2NMC	\$ 83.20	60-21HF4HM2	\$ 67.85	10-21NFBAM6	\$ 63.95
30-21HF2NMD	\$ 85.70	60-21HF4HM6	\$ 83.20	10-21NFCAM6	\$ 70.35
		60-21HF4HM9	\$ 83.20	10-21NFDAM6	\$ 75.45

High Pressure Equipment Company

P.O. Box 8248 - 2955 West 17th St., Ste 6 - Erie, PA 16505 USA - Phone: (814) 838-2028 / (800) 289-7447

www.highpressure.com / Sales@highpressure.com



High Pressure Equipment

A GRACO® Company

Adapters: Male to Male (Catalog Page 105)					
20-21LM4LM12	\$	121.45	30-21HM9NMD	\$	126.55
20-21LM6LM12	\$	121.45	10-21HM9NMF	\$	177.70
20-21LM9LM12	\$	198.05	10-21HM9NMH	\$	208.35
20-21LM12LM12	\$	134.25	60-21HM2HM2	\$	115.00
20-21LM4LM16	\$	198.05	60-21HM2HM4	\$	115.00
20-21LM6LM16	\$	198.05	60-21HM4HM4	\$	67.85
20-21LM9LM16	\$	198.05	60-21HM4HM6	\$	99.75
20-21LM12LM16	\$	198.05	60-21HM4HM9	\$	125.15
20-21LM16LM16	\$	213.45	60-21HM6HM6	\$	78.05
20-21LM12HM4	\$	121.45	60-21HM6HM9	\$	125.15
20-21LM12HM6	\$	121.45	60-21HM9HM9	\$	97.15
20-21LM12HM9	\$	121.45	100-21XM4XM4	\$	109.95
20-21LM16HM4	\$	198.05	100-21XM4XM6	\$	109.95
20-21LM16HM6	consult factory		15-21AM1AM1	\$	76.75
20-21LM16HM9	\$	198.05	15-21AM1NMA	\$	76.75
30-21HM4HM16	\$	210.90	15-21AM1AM2	\$	86.95
30-21HM6HM16	\$	204.75	15-21AM1NMB	\$	76.75
30-21HM9HM16	\$	210.90	15-21AM1HM2	\$	75.45
20-21LM12NMA	\$	209.85	15-21AM1HM4	\$	75.45
20-21LM12NMB	\$	185.30	15-21AM2AM2	\$	76.75
20-21LM12NMC	consult factory		15-21AM2NMA	\$	71.55
20-21LM12NMD	\$	185.30	15-21AM2NMB	\$	74.10
10-21LM12NMF	\$	185.30	15-21AM2HM2	\$	103.10
10-21LM12NMH	\$	198.05	15-21AM2HM4	\$	76.75
20-21LM16NMA	\$	315.00	15-21AM2LM4	\$	71.55
20-21LM16NMB	\$	247.90	15-21AM2LM6	\$	72.95
20-21LM16NMC	consult factory		15-21AM2LM9	\$	76.75
20-21LM16NMD	\$	235.10	10-21AM4AM4	\$	98.45
10-21LM16NMF	\$	247.90	10-21AM4NMB	\$	98.45
10-21LM16NMH	\$	227.40	10-21AM4NMD	\$	98.45
30-21HM2NMA	\$	115.00	10-21AM4HM4	\$	98.45
30-21HM2NMB	\$	112.45	10-21AM4LM4	\$	75.45
30-21HM4NMA	\$	66.45	10-21AM4LM6	\$	72.80
30-21HM4NMB	\$	69.00	10-21AM4LM9	\$	81.85
30-21HM4NMC	\$	98.45	10-21AM6AM6	\$	94.65
30-21HM4NMD	\$	98.45	10-21AM6LM4	\$	79.45
10-21HM4NMF	\$	200.60	10-21AM6LM6	\$	97.15
30-21HM6NMB	\$	103.65	10-21AM6LM9	consult factory	
30-21HM6NMC	\$	103.65	10-21AM6XM4	consult factory	
30-21HM6NMD	\$	103.65	10-21AM6XM6	consult factory	
30-21HM9NMB	\$	126.55	20-21LM4LM4	\$	70.35
30-21HM9NMC	\$	126.55	20-21LM4LM6	\$	94.65
			20-21LM4LM9	\$	104.85
			20-21LM4NMB	\$	72.95
			20-21LM4NMD	\$	98.45
			20-21LM4HM2	\$	99.75
			20-21LM4HM4	\$	99.75
			20-21LM4HM6	\$	104.85
			20-21LM4HM9	\$	94.65
			20-21LM6LM6	\$	94.65
			20-21LM6LM9	\$	104.85
			20-21LM6NMB	\$	98.45
			20-21LM6NMC	\$	98.45
			20-21LM6NMD	\$	98.45
			20-21LM6HM4	\$	65.30
			20-21LM6HM6	\$	99.75
			20-21LM9LM9	\$	97.15
			20-21LM9NMB	\$	106.20
			20-21LM9NMC	\$	106.20
			20-21LM9NMD	\$	111.25
			10-21LM9NMF	\$	166.05
			10-21LM9NMH	\$	213.45
			20-21LM9HM4	\$	111.25
			20-21LM9HM9	\$	111.25

High Pressure Equipment Company

P.O. Box 8248 - 2955 West 17th St., Ste 6 - Erie, PA 16505 USA - Phone: (814) 838-2028 / (800) 289-7447

www.highpressure.com / Sales@highpressure.com



High Pressure Equipment

A GRACO® Company

Couplings: Female to Female		10-21AF6NFD	\$ 79.30	20-21LF9LF12	\$ 187.90
(Catalog Pages 113)		10-21AF6NFF	\$ 135.25	20-21LF4LF16	\$ 240.20
15-21AF1	\$ 67.85	10-21AF6NFH	\$ 175.20	20-21LF6LF16	\$ 269.70
15-21AF2	\$ 67.85	20-21LF4	\$ 53.75	20-21LF9LF16	\$ 250.40
10-21AF4	\$ 76.75	20-21LF6	\$ 67.85	20-21LF12LF16	\$ 259.50
10-21AF6	\$ 86.95	20-21LF9	\$ 80.55	20-21LF4HF2	\$ 97.15
15-21AF1AF2	\$ 78.05	20-21LF12	\$ 219.70	20-21LF4HF4	\$ 90.80
10-21AF1AF4	\$ 79.30	20-21LF16	\$ 301.50	20-21LF4HF6	\$ 97.15
10-21AF1AF6	\$ 83.20	30-21HF16	\$ 339.85	20-21LF4HF9	\$ 106.20
10-21AF2AF4	\$ 81.85	15-21LF24	\$ 794.55	20-21LF6HF4	\$ 90.80
10-21AF2AF6	consult factory	20-21LF4NFA	\$ 63.95	20-21LF6HF6	\$ 95.90
10-21AF4AF6	\$ 86.95	20-21LF4NFB	\$ 58.85	20-21LF6HF9	\$ 117.55
15-21AF1HF2	\$ 80.55	20-21LF4NFC	\$ 58.50	20-21LF9HF2	\$ 102.25
15-21AF1HF4	\$ 80.55	20-21LF4NFD	\$ 63.95	20-21LF9HF4	\$ 103.65
15-21AF1HF6	\$ 86.95	10-21LF4NFF	\$ 145.70	20-21LF9HF6	\$ 107.35
15-21AF1HF9	\$ 89.55	10-21LF4NFH	consult factory	20-21LF9HF9	\$ 111.25
15-21AF2HF2	\$ 80.55	20-21LF6NFA	\$ 75.45	20-21LF12HF4	\$ 208.35
15-21AF2HF4	\$ 80.55	20-21LF6NFB	\$ 72.95	20-21LF12HF6	\$ 207.00
15-21AF2HF6	consult factory	20-21LF6NFC	\$ 78.05	20-21LF12HF9	\$ 207.00
15-21AF2HF9	\$ 118.95	20-21LF6NFD	\$ 86.95	20-21LF16HF4	\$ 232.60
10-21AF4HF2	\$ 81.90	10-21LF6NFF	\$ 150.80	20-21LF16HF6	\$ 241.50
10-21AF4HF4	\$ 84.40	10-21LF6NFH	\$ 176.25	20-21LF16HF9	\$ 272.20
10-21AF4HF6	\$ 88.25	20-21LF9NFA	\$ 78.05	60-21HF2	\$ 83.20
10-21AF4HF9	\$ 159.05	20-21LF9NFB	\$ 80.55	60-21HF4	\$ 66.45
10-21AF6HF2	consult factory	20-21LF9NFC	\$ 85.70	60-21HF6	\$ 81.85
10-21AF6HF4	\$ 85.70	20-21LF9NFD	\$ 88.25	60-21HF9	\$ 115.00
10-21AF6HF6	\$ 85.90	10-21LF9NFF	\$ 152.20	100-21XF4	\$ 120.05
10-21AF6HF9	consult factory	10-21LF9NFH	\$ 181.50	150-21XF6	\$ 133.00
15-21AF1NFA	\$ 70.35	20-21LF12NFA	consult factory	60-21HF2HF4	\$ 83.20
15-21AF1NFB	\$ 70.35	20-21LF12NFB	\$ 210.90	60-21HF2HF6	\$ 88.25
15-21AF1NFC	consult factory	20-21LF12NFC	\$ 213.45	60-21HF2HF9	\$ 112.45
15-21AF1NFD	\$ 76.75	20-21LF12NFD	\$ 189.15	60-21HF4HF6	\$ 86.95
15-21AF2NFA	\$ 70.35	10-21LF12NFF	\$ 250.40	60-21HF4HF9	\$ 109.95
15-21AF2NFB	\$ 70.35	10-21LF12NFH	\$ 260.60	60-21HF6HF9	\$ 117.55
15-21AF2NFC	consult factory	20-21LF16NFA	\$ 284.95	60-21HF4XF6	\$ 132.80
15-21AF2NFD	\$ 79.30	20-21LF16NFB	\$ 245.30	30-21HF4HF16	\$ 224.80
10-21AF4NFA	\$ 62.75	20-21LF16NFC	\$ 242.80	30-21HF2NFA	\$ 67.85
10-21AF4NFB	\$ 62.75	20-21LF16NFD	\$ 222.25	30-21HF2NFB	\$ 70.35
10-21AF4NFC	\$ 65.90	10-21LF16NFF	\$ 250.40	30-21HF2NFC	\$ 72.95
10-21AF4NFD	\$ 72.95	10-21LF16NFH	\$ 260.60	30-21HF2NFD	\$ 78.20
10-21AF4NFF	\$ 97.80	20-21LF4LF6	\$ 78.05	10-21HF2NFF	\$ 131.55
10-21AF4NFH	consult factory	20-21LF4LF9	\$ 85.70	10-21HF2NFH	\$ 169.40
10-21AF6NFA	consult factory	20-21LF6LF9	\$ 95.90	30-21HF4NFA	\$ 53.75
10-21AF6NFB	\$ 62.75	20-21LF4LF12	\$ 231.30	30-21HF4NFB	\$ 53.75
10-21AF6NFC	\$ 62.75	20-21LF6LF12	\$ 264.60	30-21HF4NFC	\$ 62.75

High Pressure Equipment Company

P.O. Box 8248 - 2955 West 17th St., Ste 6 - Erie, PA 16505 USA - Phone: (814) 838-2028 / (800) 289-7447

www.highpressure.com / Sales@highpressure.com



High Pressure Equipment

A GRACO® Company

30-21HF4NFD	\$ 63.95	10-21NMFNMF	\$ 120.05	20-21LM12HA9	\$ 98.45
10-21HF4NFF	\$ 133.00	10-21NMHNMH	\$ 194.25	20-21LM12HA12	\$ 103.65
10-21HF4NFH	\$ 164.95	15-21NMBNMC	\$ 79.30	20-21LM12HA16	\$ 117.55
30-21HF6NFA	consult factory	15-21NMBNMD	\$ 84.40	20-21LM12HA21	\$ 182.40
30-21HF6NFB	\$ 90.80	15-21NMCNMD	\$ 84.40	20-21LM16HA9	\$ 98.45
30-21HF6NFC	\$ 90.80	15-21NFANMA	\$ 101.10	20-21LM16HA12	\$ 119.15
30-21HF6NFD	\$ 93.35	15-21NFANMB	\$ 101.10	20-21LM16HA16	\$ 127.90
10-21HF6NFF	\$ 126.60	15-21NFANMC	\$ 101.10	20-21LM16HA21	\$ 138.10
10-21HF6NFH	\$ 171.15	15-21NFANMD	\$ 117.55	15-21NMBHA9	\$ 69.00
30-21HF9NFA	\$ 99.75	15-21NFBNMA	\$ 94.65	15-21NMBHA12	\$ 74.10
30-21HF9NFB	\$ 98.45	15-21NFBNMB	\$ 94.65	15-21NMBHA16	\$ 79.30
30-21HF9NFC	\$ 98.45	15-21NFBNMC	\$ 94.65	15-21NMCHA9	\$ 69.00
30-21HF9NFD	\$ 103.65	15-21NFBNMD	\$ 101.10	15-21NMCHA12	\$ 74.10
10-21HF9NFF	\$ 145.70	15-21NFCNMB	\$ 102.25	15-21NMCHA16	\$ 79.30
10-21HF9NFH	\$ 171.10	15-21NFCNMD	\$ 108.75	15-21NMDHA9	\$ 69.00
15-21AF1LF4	\$ 88.25	15-21NFDNMA	\$ 101.10	15-21NMDHA12	\$ 79.30
15-21AF1LF6	\$ 97.15	15-21NFDNMB	\$ 101.10	15-21NMDHA16	\$ 84.40
15-21AF1LF9	\$ 111.25	15-21NFDNMC	\$ 101.10	10-21NMFHA12	\$ 168.65
15-21AF1LF16	\$ 272.20	15-21NFDNMD	\$ 120.05	10-21NMFHA16	consult factory
15-21AF2LF4	\$ 92.10	10-21NFFNMD	\$ 144.45	10-21NMHHA16	\$ 185.30
15-21AF2LF6	\$ 98.45	10-21NFFNMH	\$ 148.25	40-21HA9HA9	\$ 75.45
15-21AF2LF9	\$ 111.25	10-21NFHNMD	\$ 209.55	26-21HA9HA12	\$ 75.50
15-21AF2LF16	\$ 245.30	10-21NFHNMF	\$ 342.40	26-21HA9HA16	\$ 84.40
10-21AF4LF4	\$ 95.90			26-21HA12HA12	\$ 84.40
10-21AF4LF6	\$ 98.45	Hose Adapters		26-21HA12HA16	\$ 81.90
10-21AF4LF9	\$ 112.45	(Catalog Page 111)		26-21HA16HA16	\$ 84.40
10-21AF6LF4	\$ 97.15	40-21HM4HA9	\$ 74.10		
10-21AF6LF6	\$ 99.75	30-21HM4HA12	\$ 74.10		
10-21AF6LF9	\$ 113.85	26-21HM4HA16	\$ 79.30		
		40-21HM6HA9	\$ 79.30		
NPT Adapters		30-21HM6HA12	\$ 79.30		
(Catalog Page 109)		26-21HM6HA16	\$ 161.05		
15-21NFA	\$ 86.95	40-21HM9HA9	\$ 84.40		
15-21NFB	\$ 86.95	30-21HM9HA12	\$ 84.40		
15-21NFC	\$ 86.95	26-21HM9HA16	\$ 84.40		
15-21NFD	\$ 108.75	20-21LM4HA9	\$ 74.10		
10-21NFF	\$ 189.15	20-21LM4HA12	\$ 74.10		
10-21NFH	\$ 194.25	20-21LM4HA16	\$ 76.95		
15-21NFBNFC	\$ 93.35	20-21LM6HA9	\$ 74.10		
15-21NFBNFD	\$ 103.65	20-21LM6HA12	\$ 74.10		
15-21NFCNFD	\$ 103.65	20-21LM6HA16	\$ 113.55		
15-21NMANMA	\$ 74.10	20-21LM9HA9	\$ 74.10		
15-21NMBNMB	\$ 74.10	20-21LM9HA12	\$ 74.10		
15-21NMCNMC	\$ 74.10	20-21LM9HA16	\$ 79.30		
15-21NMDNMD	\$ 74.10	15-21NMDHA16	\$ 84.40		

High Pressure Equipment Company

P.O. Box 8248 - 2955 West 17th St., Ste 6 - Erie, PA 16505 USA - Phone: (814) 838-2028 / (800) 289-7447

www.highpressure.com / Sales@highpressure.com



High Pressure Equipment

A GRACO® Company

Thermocouple Adapters (Catalog Page 118)		Tooling		Collet (Spare)	
15-21AF1AM2-T	\$ 101.10	Reseating Tools (Catalog Page 124)		2-LF4P	\$ 112.45
10-21AF1AM4-T	\$ 101.10	RTL4F4	\$ 111.25	2-LF6P	\$ 112.45
10-21AF1AM6-T	\$ 130.40	RTL4F6	\$ 127.90	2-LF9P	\$ 112.45
15-21AF1NMA-T	\$ 71.55	RTL4F9	\$ 166.05	2-HF2P*	\$ 112.45
15-21AF1NMB-T	\$ 71.55	RTHF2	\$ 111.25	2-HF4P*	\$ 112.45
15-21AF1NMC-T	\$ 71.55	RTHF4	\$ 111.25	2-HF6P*	\$ 112.45
15-21AF1NMD-T	\$ 71.55	RTHF6	\$ 127.90	2-HF9P	\$ 112.45
10-21AF1NMF-T	\$ 106.20	RTHF9	\$ 166.05	2-XF6P*	\$ 112.45
10-21AF1NMH-T	consult factory	RTXF4	\$ 111.25	*Interchangeable in any of the assemblies except 2-HF9 and 2-LF9	
15-21AF1LM4-T	\$ 90.80	RTXF6	\$ 127.90	Threading Tools (Catalog Page 125)	
15-21AF1LM6-T	\$ 98.45	Coning Tools (Catalog Page 125)		Complete Tool	
15-21AF1LM9-T	\$ 106.20	Complete Tool		2-MLF4	\$ 342.40
15-21AF1HM2-T	\$ 103.65	2-LF4	\$ 504.60	2-MLF6	\$ 342.40
15-21AF1HM4-T	\$ 103.65	2-LF6	\$ 504.60	2-MLF9	\$ 342.40
15-21AF1HM6-T	\$ 130.40	2-LF9	\$ 636.10	2-MHF2	\$ 279.90
15-21AF1HM9-T	\$ 149.55	2-HF2	\$ 558.25	2-MHF4	\$ 342.40
15-21AF2LM4-T	\$ 95.90	2-HF4	\$ 504.60	2-MHF6	\$ 342.40
15-21AF2LM6-T	\$ 98.45	2-HF6	\$ 504.60	2-MHF9	\$ 342.40
15-21AF2LM9-T	\$ 106.20	2-HF9	\$ 636.10	2-MXF6	
10-21AF2AM4-T	\$ 108.75	2-HF9-40	\$ 636.10	Threading Die (Spare)	
10-21AF2AM6-T	\$ 125.15	2-XF4	\$ 512.35	1/8-40LH	\$ 102.25
15-21AF2HM4-T	\$ 111.25	2-XF6	\$ 530.15	1/4-28LH	\$ 126.55
15-21AF2HM6-T	\$ 117.55	Cutter (Spare)		3/8-24LH*	\$ 126.55
15-21AF2HM9-T	\$ 117.55	2-LF4L*	\$ 149.55	9/16-18LH*	\$ 126.55
15-21AF2NMA-T	\$ 74.10	2-LF6L*	\$ 149.55	Guide Bushing (Spare)	
15-21AF2NMB-T	\$ 74.10	2-LF9L	\$ 149.55	2-MLF4P*	\$ 57.65
15-21AF2NMC-T	\$ 74.10	2-HF2L*	\$ 181.50	2-MLF6P*	\$ 57.65
15-21AF2NMD-T	\$ 74.10	2-HF4L*	\$ 149.55	2-MLF9P*	\$ 57.65
10-21AF2NMF-T	\$ 108.75	2-HF6L*	\$ 149.55	2-MHF4P*	\$ 57.65
10-21AF2NMH-T	\$ 138.10	2-HF9L	\$ 149.55	2-MHF6P*	\$ 57.65
10-21AF4HM9-T	\$ 119.05	2-HF9L-40	\$ 149.55	2-MHF9P*	\$ 57.65
10-21AF4LM9-T	\$ 118.95	2-XF6L*	\$ 182.80	2-MXF6P*	\$ 57.65
Pressure Gauges (Catalog Page 120)				*Interchangeable in any of the assemblies except 2-MHF2	
4PG5	\$ 548.05			Rapid Tap 4 oz	\$ 32.05
4PG10	\$ 554.40				
6PG20	\$ 932.45				
6PG20C	\$ 852.05				
6PG30	\$ 1,163.70				
6PG30C	\$ 1,056.40				
6PG50	\$ 1,908.25				

High Pressure Equipment Company

P.O. Box 8248 - 2955 West 17th St., Ste 6 - Erie, PA 16505 USA - Phone: (814) 838-2028 / (800) 289-7447

www.highpressure.com / Sales@highpressure.com



High Pressure Equipment

A GRACO® Company

Spare Parts		Silicone O-ring B00147	\$	9.95	Safety Heads (Rupture Assemblies)	
Taper Seal		Teflon Packing* B00181	\$	10.25	Hold Down Nut 200204	\$ 63.95
15,000 psi		Grafoil Packing B01417	\$	15.35	Hold Down Ring 200130	\$ 56.25
AF1 Series Valves		w/Grafoil Packing (1 ea.) B01357	\$	16.10		
Handle 200263	\$ 17.95	Bottom Washer 200156	\$	14.25	Medium Pressure - New Style	
Stem Nut 200566	\$ 37.10	Lower Stem Regulating 213970	\$	60.90	20,000 psi	
Lock Nut 201030	\$ 12.00				LF4 and LF6 Series Valves	
Stem 202645	\$ 90.80	Ball Check Valves			Handle 212435	\$ 35.85
Top Washer 200267	\$ 16.75	Taper Seal (AF1, AF2, AF4, AF6)			Stem Nut 213935	\$ 55.15
Buna O-ring B00101	\$ 7.75	Ball (316 SS) B00521		\$ 9.15	Locking Device 207733	\$ 19.30
Viton O-ring B00614	\$ 10.25	Ball Support 207900		\$ 35.85	Set Screw B01489	\$ 9.15
Silicone O-ring B00149	consult factory	Spring B00551		\$ 14.25	Upper Stem 213934	\$ 62.75
Teflon Packing B00195	\$ 10.25	Gasket B00552		\$ 12.85	Lower Stem 213933	\$ 56.25
Grafoil Packing B01379	\$ 14.25	Line Filter Discs			Top Washer 207731	\$ 19.30
Bottom Washer 200266	\$ 14.25	AF4, AF6, NFB, NFC, NFD: (2 per set)			Polypak Seal B01388	\$ 23.00
Regulating Stem Assy 209350	\$ 90.80	0.5 Micron Set B01442		\$ 30.70	Grafoil Packing Set/2 B01391	\$ 23.30
		2 Micron Set B01443		\$ 30.70	Teflon Packing Set/2 B01392	\$ 23.30
15,000 psi		5 Micron Set B01444		\$ 30.70	Bottom Washer 207732	\$ 19.30
AF2 Series Valves		10 Micron Set B00923		\$ 30.70	LF4 Removable Seat Gland 208512	\$ 157.25
Handle 200263	\$ 17.95	20 Micron Set B01445		\$ 30.70	LF6 Removable Seat Gland 208431	\$ 157.25
Stem Nut 200265	\$ 37.10	40 Micron Set B00610		\$ 30.70	Lower Regulating Stem Assembly (+MTS) 209355	\$ 105.55
Lock Nut 200268	\$ 11.65	100 Micron Set B00607		\$ 30.70	Lens Ring 208432	\$ 69.00
Stem 202645	\$ 90.80	AF1, AF2: (2 per set)				
Top Washer 200267	\$ 16.75	0.5 Micron Set B01450		\$ 30.70	20,000 psi - New Style	
Buna O-ring B00101	\$ 7.75	2 Micron Set B01451		\$ 30.70	LF9 Series Valves	
Viton O-ring B00614	\$ 10.25	5 Micron Set B01452		\$ 30.70	Handle 212436	\$ 26.95
Silicone O-ring B00149	consult factory	10 Micron Set B00475		\$ 30.70	Stem Nut 207737-AM45	\$ 56.25
Teflon Packing B00195	\$ 10.25	20 Micron Set B01453		\$ 30.70	Locking Device 207734	\$ 19.30
Grafoil Packing B01379	\$ 14.25	40 Micron Set B00616		\$ 30.70	Set Screw B01489	\$ 9.15
Bottom Washer 200266	\$ 14.25	100 Micron Set B00474		\$ 30.70	Upper Stem Assembly 212431	\$ 115.00
Reg. Stem Assy 209350	\$ 90.80	Soft Seat Check Valves			Top Washer 207738	\$ 24.40
		Poppet 202272		\$ 57.65	Polypak Seal B01387	\$ 23.00
10,000 psi		O-ring Buna B00159		\$ 7.75	Grafoil Packing Set/2 B01386	\$ 11.65
AF4 and AF6 Series Valves		O-ring Teflon B00152		\$ 7.75	Teflon Packing Set/2 207341	\$ 12.40
Handle 212435	\$ 35.85	O-ring Viton B00870		\$ 9.15	Bottom Washer 207342	\$ 21.85
Locking Device 200657	\$ 19.55	Spring B00551		\$ 14.25	Std. Lower Stem 207467	\$ 74.10
Lower Stem 213912	consult factory	Gasket B00552		\$ 12.85	Lower Reg. Stem 208108	\$ 106.20
Upper Stem 213909	\$ 62.75				High Temp. Stem Assy. 208387	consult factory
Top Washer 200154	\$ 16.75				Removable Seat Gland 208592	\$ 157.25
Buna O-ring B00102	\$ 7.75				Lens Ring 200897	\$ 69.00
Viton O-ring B-849	consult factory					

High Pressure Equipment Company

P.O. Box 8248 - 2955 West 17th St., Ste 6 - Erie, PA 16505 USA - Phone: (814) 838-2028 / (800) 289-7447

www.highpressure.com / Sales@highpressure.com



High Pressure Equipment

A GRACO® Company

20,000 psi	Ball Check Valves	Safety Heads (Rupture Assemblies)
LF12 Series Valves	Medium Pressure (LF4 and LF6)	Hold Down Nut 200204 \$ 63.95
Handle 208673 \$ 28.20	Ball (316 SS) B00521 \$ 9.15	Hold Down Ring 200130 \$ 56.25
Handle Collar 208674 \$ 157.25	Ball Support 207900 \$ 35.85	
Packing Gland 208675 \$ 191.70	Spring B00551 \$ 14.25	High Pressure
Locking Device 208669 \$ 24.40	Gasket B00552 \$ 12.85	30,000 psi
Bearing Washer 208676 \$ 38.45		HF2 Series Valves
Stem Sleeve 208677 \$ 109.95	Medium Pressure (LF9)	Handle 200263 \$ 17.95
Upper Stem 208678 \$ 97.15	Ball (316 SS) B00522 \$ 10.25	Stem Nut 200265 \$ 37.10
Lower Stem 208679 \$ 101.10	Ball Support 207901 \$ 38.45	Lock Nut 200268 \$ 11.65
Top Washer 208754 \$ 50.05	Spring B00958 \$ 17.95	Stem 202645 \$ 90.80
	Gasket B00959 \$ 14.25	Top Washer 200267 \$ 16.75
Teflon Packing Set/2 208740 \$ 23.30		Buna O-ring B00101 \$ 7.75
Grafoil Pkg Set/3 B01455 \$ 76.95	Line Filter Discs	Viton O-ring B00614 \$ 10.25
Polypak B01431 \$ 23.00	LF4, LF6 and LF9 Series (2 per set)	Silicone O-ring B00149 <small>consult factory</small>
Bottom Washer 208755 \$ 50.05	0.5 Micron Set B01442 \$ 30.70	Grafoil Packing B01379 \$ 14.25
Rem. Seat Gland 209280 \$ 218.60	2 Micron Set B01443 \$ 30.70	Teflon Packing* B00195 \$ 10.25
Lens Ring 209279	5 Micron Set B01444 \$ 30.70	Bottom Washer 200266 \$ 14.25
	10 Micron Set B00923 \$ 30.70	Regulating Stem Assy 209350 \$ 90.80
20,000 psi	20 Micron Set B01445 \$ 30.70	
LF16 Series Valves	40 Micron Set B00610 \$ 30.70	30,000 psi - New Style
Handle 208673 \$ 28.20	100 Micron Set B00607 \$ 30.70	HF4, HF6, and HF9 Series Valves
Handle Collar 208680 \$ 161.00	Spacer 201104 \$ 20.45	Handle 212435 \$ 35.85
Packing Gland 208681 \$ 196.80		Locking Device 200657 \$ 19.55
Locking Device 208670 \$ 25.65	Soft Seat Check Valves	Set Screw B01489 \$ 9.15
Bearing Washer 208682 \$ 40.25	LF4 and LF6 Series	Upper Stem 213909 \$ 62.75
Stem Sleeve 208683 \$ 196.80	Poppet 202272 \$ 57.65	Lower Stem 213910 \$ 56.25
Upper Stem 208684 \$ 155.75	O-ring Buna B00159 \$ 7.75	Top Washer 200154 \$ 16.75
Lower Stem 208685 \$ 136.80	O-ring Teflon B00152 \$ 7.75	Buna O-ring B00102 \$ 7.75
Bearing Washer 208686 \$ 47.35	O-ring Viton B00870 \$ 9.15	Viton O-ring B00849 \$ 10.25
Top Washer 208756 \$ 59.75	Spring B00551 \$ 14.25	Silicone O-ring B00147 \$ 9.95
Teflon Pkg Set/2 208741 \$ 29.10	Gasket B00552 \$ 12.85	Grafoil Packing B01417 \$ 15.35
Grafoil Pkg Set/2 B01440 \$ 51.30		Teflon Packing* B00181 \$ 10.25
Polypak (1) B01742 \$ 23.00	LF9 Series	Teflon/Buna 209276 \$ 47.35
Bottom Washer 208757 \$ 59.75	Poppet 204740 \$ 62.25	Bottom Washer 200156 \$ 14.25
Rem. Seat Gland 209282 \$ 266.75	O-ring Buna B00104 \$ 11.65	Bottom Spacer 200155 \$ 12.85
Lens Ring 10K 209281 \$ 124.15	O-ring Teflon B00161 \$ 12.85	HF4 Remov. Seat Gland 200750 \$ 168.65
Lens Ring 20K 209972 \$ 116.35	Spring B00958 \$ 17.95	HF6 Remov. Seat Gland 200751 \$ 168.65
	Gasket B00959 \$ 14.25	HF9 Remov. Seat Gland 200752 \$ 168.65
		Lower Regulating Stem Kit 209348 \$ 58.85
		Lens Ring 200753 \$ 69.00

High Pressure Equipment Company

P.O. Box 8248 - 2955 West 17th St., Ste 6 - Erie, PA 16505 USA - Phone: (814) 838-2028 / (800) 289-7447

www.highpressure.com / Sales@highpressure.com



High Pressure Equipment

A GRACO® Company

Ball Valves		Back Up Washer 210286	\$ 9.15	Trunnion Style Ball Valves	
Handle 208642	\$ 30.75	Body Bushing 210219	\$ 14.25	0.50 Orifice	
Roll Pin B01509	\$ 7.75	Trunnion 2-Way 210598	\$ 78.00	Handle 208673	\$ 28.20
Handle Stop Collar (2/3 way) 208643	\$ 41.00	Trunnion 180° 210235	\$ 81.85	Set Screw 211696	\$ 25.65
Stop Collar (3-way 180°) 208730	\$ 41.00	Trunnion Diverter 210360	\$ 81.85	Stop Collar 403588	\$ 76.75
Stem 208644	\$ 74.10	Bottom Bushing 210218	\$ 14.25	Stem 403587	\$ 69.00
Packing Gland 208645	\$ 42.20	Body 601934	\$ 290.05	Bearing Washer 211104	\$ 37.10
Locking Device 207733	\$ 19.30	O-Ring B00823	\$ 10.25	O-Ring B01101	\$ 10.25
Top Washer 207731	\$ 19.30	O-Ring B01032	\$ 10.25	Back Up Washer B01790	\$ 14.25
Teflon Packing Set/2 B01392	\$ 23.30	Square Adapter 210672	\$ 98.45	Ball Seat Assembly 211096	\$ 95.90
Bottom Washer 207732	\$ 19.30	Trunnion Style Ball Valves		Ball Seat 211094	\$ 50.05
Bearing Washer 208646	\$ 33.30	.375 Orifice		Ball Seat Holder 211095	\$ 58.85
Body (2-way) 208641	\$ 236.40	Handle 210285	\$ 29.50	Belleville Washer B01892	\$ 12.85
Body (3-way, Diverter) 208729	\$ 273.40	Set Screw 210242	\$ 16.75	Packing Washer 211103	\$ 41.00
0.485 Ball (2-way) 208647	\$ 30.75	Stop Collar 210616	\$ 41.00	Back Up Washer 211105	\$ 19.30
0.485 Ball (3-way) 208721	\$ 41.00	Stop Collar 210217	\$ 41.00	Body Bushing 211102	\$ 63.95
0.485 Ball (Diverter) 208834	consult factory	Stop Collar 210217	\$ 41.00	Trunnion 2-Way 211097	\$ 242.80
Ball Seat 208648	\$ 28.20	Stem 210229	\$ 42.20	Trunnion 180° 211675	\$ 291.30
O-ring B00821	\$ 10.25	Panel Nut 209219-8	\$ 38.45	Trunnion Diverter 211676	\$ 291.30
Trunnion Style Ball Valves		Bearing Washer 210230	\$ 21.85	Bottom Bushing 211101	\$ 33.30
.187 Orifice		O-Ring B01117	\$ 9.15	Body 602447	\$ 1,296.60
Handle 210285	\$ 29.50	Back Up Ring B01578	\$ 9.15	O-Ring B01893	\$ 15.35
Set Screw 210242	\$ 16.75	Ball Seat Assembly 210220	\$ 81.85	O-Ring B01340	\$ 15.35
Stop Collar 210616	\$ 41.00	Ball Seat 210221	\$ 44.85	Bottom Gland 211106	\$ 273.40
Stop Collar 210217	\$ 41.00	Ball Seat Holder 210222	\$ 41.00	Square Adapter 211721	\$ 103.60
Stem 210229	\$ 42.20	Belleville Washer B01605	\$ 9.15	Hipco Air Operated Valves	
Panel Nut 209219-8	\$ 38.45	Packing Washer 210223	\$ 16.75	Normally Closed - air to open	
Bearing Washer 210230	\$ 21.85	Back Up Washer 210288	\$ 10.25	Taper seal 30,000 psi B01397	\$ 81.85
O-Ring B01117	\$ 9.15	Body Bushing 210219	\$ 14.25	Taper seal 60,000 psi B01397	\$ 81.85
Back Up Washer B01578	\$ 9.15	Trunnion 2-Way 210599	\$ 88.25	Taper seal 20,000 psi B01428	\$ 81.85
Ball Seat Assembly 210233	\$ 51.15	Trunnion 180° 210224	\$ 88.25	O-ring Set/2 B01350	\$ 30.70
Ball Seat 210231	\$ 24.40	Trunnion Diverter 210359	\$ 88.25	O-ring B00105	\$ 10.25
Ball Seat Holder 210232	\$ 30.75	Bottom Bushing 210218	\$ 14.25		
Belleville Washer B01604	\$ 6.55	Body 601935	\$ 351.30		
Packing Washer 210234	\$ 14.25	O-Ring B01584	\$ 11.65		
		O-Ring B01583	\$ 10.25		
		O-Ring B-809	consult factory		
		Square Adapter 210672	\$ 98.45		

High Pressure Equipment Company

P.O. Box 8248 - 2955 West 17th St., Ste 6 - Erie, PA 16505 USA - Phone: (814) 838-2028 / (800) 289-7447

www.highpressure.com / Sales@highpressure.com



High Pressure Equipment

A GRACO® Company

Normally Open - air to close	Normally Open - air to close	Pking Set Teflon/Nylatron 214089	\$ 50.05
Spring B00395 \$ 38.45	"D" Series	Lens Ring 201238	\$ 69.00
O-ring B00105 \$ 10.25	Spring B00395 \$ 38.45	HF4 Remov. Seat Gland 200750	\$ 168.65
10,000 psi Series (AF4 and AF6)	Diaphragm B00828 \$ 58.85	HF6 Remov. Seat Gland 200751	\$ 168.65
Stem 207624 \$ 144.45	Gasket B00451 \$ 17.95	HF9 Remov. Seat Gland 200752	\$ 168.65
Packing Gland 207525 \$ 101.10	10,000 psi Series	Grafoil Packing B01379	\$ 14.25
Locknut B01225 \$ 12.85	Stem 204324 \$ 144.45	100,000 psi Series	
30,000 psi Series	Top/Btm Pking Washer 201764 \$ 28.20	Stem 205432A \$ 144.45	
Stem 207622 \$ 144.45	Teflon Pking Set/2 B00185 \$ 28.50	Pking Set Teflon/Nylatron 214089	\$ 50.05
Packing Gland 207525 \$ 101.10	Polypak B01406 \$ 23.00	Top Washer 200717	\$ 16.75
Locknut B01225 \$ 12.85	Top/Btm Packing Washer 201764 \$ 28.20	Teflon Packing B00195	\$ 10.25
60,000 psi Series	Lens Ring 204325 \$ 69.00	Bottom Washer 200716	\$ 14.25
Stem 209426 \$ 144.45	Rem. Seat Gland 200898 \$ 168.65	Bottom Spacer 200718	\$ 12.85
Packing Gland 207525 \$ 101.10	20,000 psi Series	Lens Ring 205434	\$ 71.55
Locknut B01225 \$ 12.85	Spring B01068 \$ 267.15	XF4 Remov. Seat Gland 208519	\$ 168.65
LF4 and LF6 Series	Spring B00395 \$ 38.45	XF6 Remov. Seat Gland 206785	\$ 168.65
Stem 208215 \$ 147.00	Diaphragm B00828 \$ 58.85	Complete Lower Section Valve Assemblies,	
Packing Gland 208217 \$ 97.15	Gasket B00451 \$ 17.95	including Body, Stem, Packing Components,	
Locknut 202480 consult factory	Stem 204324 \$ 144.45	etc. for assembly to existing Air Operator	
LF9 Series (rated 10,000 psi)	Top/Btm Pking Washer 201764 \$ 28.20	Lower Unit 30R12HF4R	\$ 860.26
Upper Stem 208799 \$ 81.65	Teflon Pking Set/2 B00185 \$ 28.50	Lower Unit 30R12HF6R	\$ 860.26
Lower Stem 207467 \$ 74.10	Top/Btm Pking Washer 201764 \$ 28.20	Lower Unit 30R12HF9R	\$ 1,009.10
Packing Gland 208822 \$ 101.10	Lens Ring 204325 \$ 69.00	Lower Unit 10R12LF9R	\$ 1,009.10
Locknut 208390 \$ 21.85	Rem. Seat Gland 208208 \$ 168.65	Lower Unit 20R12LF9R	\$ 1,092.20
Diaphragm B01356 \$ 35.85	30,000 psi Series	Lower Unit 60R12HF4R	\$ 877.65
Snap Ring Set/2 B01351 \$ 15.50	Stem 202890 \$ 144.45	Lower Unit 60R12HF6R	\$ 877.65
Support Washer 207526 \$ 25.65	Top Washer 200154 \$ 16.75	Lower Unit 60R12HF9R	\$ 1,009.10
Hex Nut (Nylok) B01354 \$ 9.15	Teflon Packing B00181 \$ 10.25	Lower Unit 100R12XF6R	consult factory
Remarco Air Operated Valves	Bottom Washer 200156 \$ 14.25	Lower Unit 10R12HF9R	consult factory
Normally Closed - air to open	Bottom Spacer 200155 \$ 12.85	Relief Valve Assembly 402633	
"SD" Series	Pking Set Teflon/Nylon 210291 \$ 50.05	Stem 208545	\$ 109.95
Spring B00780 \$ 112.45	Lens Ring 200753 \$ 69.00	O-ring B00821	\$ 10.25
Diaphragm B00828 \$ 58.85	HF4 Remov. Seat Gland 200750 \$ 168.65	Remov. Seat Gland 203502	\$ 167.45
Gasket B00451 \$ 17.95	HF6 Remov. Seat Gland 200751 \$ 168.65	Stem Seat 208554	\$ 62.75
	HF9 Remov. Seat Gland 200752 \$ 168.65	Seal Ring Seat	
	60,000 psi Series	3,000 to 10,999 psi, 208547	\$ 126.55
	Stem 202886 \$ 144.45	11,000 to 20,999 psi, 208537	\$ 126.55
	Top Washer 200717 \$ 16.75	21,000 to 30,000 psi, 208548	\$ 116.85
	Teflon Packing B00195 \$ 10.25	30,001 to 45,000 psi, 210857	\$ 126.55
	Bottom Washer 200716 \$ 14.25	45,001 to 60,000 psi, 210858	\$ 126.55
	Bottom Spacer 200718 \$ 12.85		

High Pressure Equipment Company

P.O. Box 8248 - 2955 West 17th St., Ste 6 - Erie, PA 16505 USA - Phone: (814) 838-2028 / (800) 289-7447

www.highpressure.com / Sales@highpressure.com



High Pressure Equipment

A GRACO® Company

High Temperature Valves		Pressure Generators		Model 81-5.75-10	
30,000 psi Series		Model 87-6-5		Shaft 208128 \$ 1,201.80	
Handle 200151	\$ 23.10	Shaft (7/8) 200450	\$ 746.10	Top Washer 208137	\$ 106.20
Stem Assembly 210154	\$ 207.00	Nut 201482	\$ 751.10	Polypak Seal Set/2* B01401	\$ 59.00
Packing Gland 200152	\$ 41.00	Top Packing Washer 207357	\$ 71.55	Teflon Packing B01399	\$ 57.65
Locking Device Collar 207450	\$ 39.70	Teflon Packing* B00208	\$ 57.65	Bottom Washer 208221	\$ 83.20
High Temp. Housing					
206880	\$ 149.55	Bottom Washer 207358	\$ 63.95		
Top Packing Washer 200188	\$ 28.20	Polypak Seal Set/2* B01369	\$ 59.00	Model 68-5.75-15	
Bottom Packing Washer				Shaft 208129 \$ 384.60	
200187	\$ 21.85			Top Washer 208138 \$ 101.15	
Grafoil Packing Set/3 B01357	\$ 48.30	Model 62-6-10		Polypak Seal Set/2* B01402 \$ 59.00	
Gasket 213534	\$ 37.10	Shaft (5/8) 200450	\$ 746.10	Teflon Packing B01400 \$ 54.85	
		Nut 201482	\$ 751.10	Bottom Washer 208222 \$ 82.35	
20,000 psi Series (LF4 and LF6)		Top Packing Washer 206203	\$ 71.55	Model 50-5.75-30	
Handle 200151	\$ 23.10	Teflon Packing* B00201	\$ 57.65	Shaft 208130 \$ 384.60	
Stem Assembly 208262	\$ 208.35	Bottom Washer 201773	\$ 63.95	Top Washer 208139 \$ 106.20	
Packing Gland 207730	\$ 41.00	Polypak Seal Set/2* B01370	\$ 59.00	Polypak Seal Set/2* B01371 \$ 59.00	
Locking Device 207733	\$ 19.30			Teflon Packing B01066 \$ 57.65	
High Temp. Housing		Model 50-6-15		Bottom Washer 205410 \$ 63.95	
208264	\$ 149.55	Shaft (1/2) 200450	\$ 746.10	Model 37-5.75-60	
Top Washer 207731	\$ 19.30	Nut 201482	\$ 751.10	Shaft 204861 \$ 384.60	
Bottom Washer 207732	\$ 19.30	Top Washer 205408	\$ 71.55	Top Washer 205853 \$ 106.20	
Grafoil Packing Set/2 B01391	\$ 23.30	Teflon Packing* B01066	\$ 57.65	Polypak Seal Set/2* B01373 \$ 59.00	
Seal Ring 208265	\$ 61.35	Bottom Washer 205410	\$ 63.95	Teflon Packing Set/6 B00777 \$ 61.25	
		Polypak Seal Set/2* B01371	\$ 59.00	Bottom Washer 204117 \$ 28.20	
20,000 psi Series (LF9)		Model 37-6-30		Model 31-5.75-75	
Handle 200754	\$ 26.90	Shaft (3/8) 200450	\$ 746.10	Shaft 208749 \$ 384.60	
Upper Stem Assembly 207979	\$ 56.25	Nut 201482	\$ 751.10	Top Washer 208750 \$ 106.20	
Lower Stem Assembly 208388	\$ 180.20	Top Washer 206234	\$ 71.55	Upper Shaft 209620 \$ 443.30	
Packing Gland 207737	\$ 53.60	Teflon Packing B01142	\$ 57.65	Lower Shaft 210125 \$ 492.80	
Locking Device 207734	\$ 19.30	Bottom Washer 206235	\$ 63.95	Polypak Seal Set/2 B01418 \$ 59.00	
High Temp. Housing		Polypak Seal Set/2* B01372	\$ 59.00	Model 25-5.75-100	
208389	\$ 149.55			Shaft 209619 \$ 795.85	
Top Washer 207738	\$ 24.40	Model 112-5.75-5		Top Washer 208765 \$ 106.20	
Bottom Washer 207342	\$ 21.85	Shaft 208127	\$ 384.60	Upper Shaft 209620 \$ 443.30	
		Top Washer 208136	\$ 106.20	Lower Shaft 209621 \$ 492.85	
Grafoil Packing Set/2 B01386	\$ 23.30	Polypak Seal Set/2* B01396	\$ 59.00	Polypak Seal Set/2 B01419 \$ 59.00	
Seal Ring 208391	\$ 70.35	Teflon Packing* B01398	\$ 55.95		
		Bottom Washer 208220	\$ 85.70		

***Note: Polypak packing is supplied as standard and requires no bottom packing washer. When Teflon packing is used, a bottom packing washer must be installed.**

High Pressure Equipment Company

P.O. Box 8248 - 2955 West 17th St., Ste 6 - Erie, PA 16505 USA - Phone: (814) 838-2028 / (800) 289-7447

www.highpressure.com / Sales@highpressure.com



High Pressure Equipment

A GRACO® Company

Spare Parts Kits	15-41AF1T/2T-RK	\$ 92.40	20-LF9-RK	\$ 144.45
Taper Seal	Poppet 202272		Lower Stem 213927	
Hand Valves / Check Valves	O-Ring (Buna) B00159		Packing 207341 (2)	
15-AF1-RK	Spring B00551		Top Washer 207738	
Stem Assembly 202645	Gasket B00552		Bottom Washer 207342	
Top Washer 200267				
Packing B00195	10-41AF4/6-RK	\$ 70.10	20-LF9-R-RK	\$ 210.90
Bottom Washer 200266	Ball B00521		Lower Stem 213927	
	Ball Support 207900		Packing 207341 (2)	
15-15AF1-RK	Spring B00551		Top Washer 207738	
Stem Assembly 202645	Gasket B00552		Bottom Washer 207342	
Top Washer 200267			Lens Ring 200897	
Packing B00195	10-41AF4T/6T-RK	\$ 92.40	20-15LF9-RK	\$ 281.10
Bottom Washer 200266	Poppet 202272		Lower Stem 213927 (2)	
	O-Ring (Buna) B00159		Packing 207341 (4)	
15-AF2-RK	Spring B00551		Top Washer 207738 (2)	
Stem Assembly 202645	Gasket B00552		Bottom Washer 207342 (2)	
Top Washer 200267				
Packing B00195	Medium Pressure		Medium Pressure	
Bottom Washer 200266	Hand Valves - New Style		Hand Valves	
	- Slotted Stem		20-LF12-RK	\$ 224.80
15-15AF2-RK	20-LF4/6-RK	\$ 116.35	Lower Stem 208679	
Stem Assembly (2) 202645	Lower Stem 213933		Top Washer 208754	
Top Washer (2) 200267	Top Washer 207731		Packing 208740 (2)	
Packing (2) B00195	Packing B01392 (2)		Bottom Washer 208755	
Bottom Washer (2) 200266	Bottom Washer 207732			
			20-15LF12-RK	\$ 427.45
10-AF4/6-RK	20-LF4R/6R-RK	\$ 182.80	Lower Stem 208679 (2)	
Lower Stem 213912	Lower Stem 213933		Top Washer 208754 (2)	
Top Washer 200154	Top Washer 207731		Packing 208740 (4)	
Packing B00181	Packing B01392 (2)		Bottom Washer 208755 (2)	
Bottom Washer 200156	Bottom Washer 207732			
	Lens Ring 208432		20-12LF12-R-RK	\$ 329.60
10-15AF4/6-RK	20-15LF4/6-RK	\$ 365.60	Lower Stem 208679	
Lower Stem 213912 (2)	Lower Stem 213933 (2)		Top Washer 208754	
Top Washer 200154 (2)	Top Washer 207731 (2)		Packing 208740 (2)	
Packing B00181 (2)	Packing B01392 (4)		Bottom Washer 208755	
Bottom Washer 200156 (2)	Bottom Washer 207732 (2)		Lens Ring 209279	
15-41AF1/2-RK				
Ball B00521				
Ball Support 207900				
Spring B00551				

High Pressure Equipment Company

P.O. Box 8248 - 2955 West 17th St., Ste 6 - Erie, PA 16505 USA - Phone: (814) 838-2028 / (800) 289-7447

www.highpressure.com / Sales@highpressure.com



High Pressure Equipment

A GRACO® Company

20-LF16-RK \$ 290.05 Lower Stem 208685 Top Washer 208756 Packing 208741 (2) Bottom Washer 208757	20-41LF12-RK \$ 480.25 Cover 209401 Ball B01461 Spring B01439 Ball Support 209532	High Pressure 30,000-60, 000 psi Hand Valves - New Style, Slotted Stem 30-HF4/6/9-RK \$ 134.25 Lower Stem 213910 Top Washer 200154 Packing B00181 Bottom Washer 200156 Bottom Spacer 200155
20-15LF16-RK \$ 580.10 Lower Stem 208685 (2) Top Washer 208756 (2) Packing 208741 (4) Bottom Washer 208757 (2)	20-41LF12-T-RK \$ 551.90 Cover 209401 O-Ring B02003 Spring B01439 Poppet 209275	30-HF4/6/9--R-RK \$ 203.25 Lower Stem 213910 Top Washer 200154 Packing B00181 Bottom Washer 200156 Bottom Spacer 200155
20-12LF16-R-RK \$ 403.75 Lower Stem 208685 Top Washer 208756 Packing 208741 (2) Bottom Washer 208757 Lens Ring 209972	20-41LF16-RK \$ 474.05 Cover 209085-H1150 Ball B01470 Spring B01429 Ball Support 209554	30-15HF4/6/9-RK \$ 406.50 Lower Stem 213910 (2) Top Washer 200154 (2) Packing B00181 (2) Bottom Washer 200156 (2) Bottom Spacer 200155 (2)
Medium Pressure Check Valves 20-41LF4/6-RK \$ 72.95 Ball B00521 Ball Support 207900 Spring B00551 Gasket B00552	20-41LF16-T-RK \$ 558.25 Cover 209085-H1150 O-Ring B01421 Spring B01429 Poppet 209086	60-HF2/4/6/9-RK \$ 138.10 Lower Stem 213911 Top Washer 200717 Packing Set 214089 Bottom Washer 200716
20-41LF4T/6T-RK \$ 93.35 Poppet 202272 O-Ring (Buna) B00159 Spring B00551 Gasket B00552	High Pressure Hand Valves 30-HF2-RK \$ 134.25 Stem Assembly 202645 Top Washer 200267 Packing B00195 Bottom Washer 200266	60-HF2/4/6/9-R-RK \$ 208.35 Lower Stem 213911 Top Washer 200717 Packing Set 214089 Bottom Washer 200716 Lens Ring 201238
20-41LF9-RK \$ 80.55 Ball B00522 Ball Support 207901 Spring B00958 Gasket B00959	30-15HF2-RK \$ 268.50 Stem Assembly 202645 (2) Top Washer 200267 (2) Packing B00195 (2) Bottom Washer 200266 (2)	60-15HF2/4/6/9-RK \$ 274.80 Lower Stem 213911 (2) Top Washer 200717 (2) Packing Set 214089 (2) Bottom Washer 200716 (2)
20-41LF9T-RK \$ 109.90 Poppet 204740 O-Ring (Buna) B00104 Spring B00958		

High Pressure Equipment Company

P.O. Box 8248 - 2955 West 17th St., Ste 6 - Erie, PA 16505 USA - Phone: (814) 838-2028 / (800) 289-7447

www.highpressure.com / Sales@highpressure.com



High Pressure Equipment

A GRACO® Company

High Pressure 30,000 PSI Check Valves 30-41HF2/4/6/9-T-RK \$ 93.35 Poppet 202272 O-Ring (Buna) B00159 Spring B00551 Gasket B00552	100-12XF4-R-RK \$ 439.15 Stem Assembly 210127 Top Washer 402485C Packing 208691 (3) Bottom Washer 200716 Lens Ring 205434	Trunnion Ball Valves .375 2-Way 15-74BV-RK \$ 387.10 O-Ring B01117 Back-up Ring B01578 Ball Seat Assembly 210220 (2) Packing Washer 210223 (2) Back-up Washer 210288 (4) Trunnion 210599 O-Ring B01584 (2) O-Ring B01583 O-Ring B00809 (2) Stem, Trunnion 210229 Washer, Bearing, Peek 210230
High Pressure 60,000 PSI Check Valves 60-41HF2/4/6/9-RK \$ 60.25 Ball B00516 Ball Support 207900 Spring B00551	150-12XF6-R-RK \$ 439.15 Stem Assembly 210127 Top Washer 402485C Packing 208691 (3) Bottom Washer 200716 Lens Ring 205434	Trunnion Ball Valves .375 3-Way 90 Degree 15-76BV-RK \$ 387.10 O-Ring B01117 Back-up Ring B01578 Ball Seat Assembly 210220 (2) Packing Washer 210223 (2) Back-up Washer 210288 (4) Trunnion 210359 O-Ring B01584 (2) O-Ring B01583 O-Ring B00809 (2) Stem, Trunnion 210229 Washer, Bearing, Peek 210230
60-41HF4/6/9-T-RK \$ 94.65 Poppet 202272 O-Ring (Buna) B00159 Spring B00551 Gasket B00310	Ball Valves Trunnion Ball Valves .187 2-Way 20-71BV-RK \$ 308.05 O-Ring B01117 (3) Back-up Ring B01578 Ball Seat Assembly 210233 (2) Packing Washer 210234 (2) Back-up Washer 210286 (4) Trunnion 210598 O-Ring B00823 (2) O-Ring B01032 Stem, Trunnion 210229 Washer, Bearing, Peek 210230	Trunnion Ball Valves .187 3-Way 90° 20-73BV-RK \$ 308.05 O-Ring B01117 (3) Back-up Ring B01578 Ball Seat Assembly 210233 (2) Packing Washer 210234 (2) Back-up Washer 210286 (4) Trunnion 210360 O-Ring B00823 (2) O-Ring B01032 Stem, Trunnion 210229 Washer, Bearing, Peek 210230
Ultra High Pressure Manual Valves 100-XF4/150-XF6-RK \$ 325.85 Stem Assembly 210127 Top Washer 402485C Packing 208691 Bottom Washer 200716	100-15XF4-RK \$ 651.70 Stem Assembly 210127 (2) Top Washer 402485C (2) Packing 208691 Bottom Washer 200716 (2)	Trunnion Ball Valves .500 2-Way 10-80BV-RK \$ 688.60 O-Ring B01101 Back-up Ring B01790 Ball Seat Assembly 211096 (2) Packing Washer 211103 (2) Back-up Washer 211105 (4) Trunnion 211097 O-Ring B01893 (3) O-Ring B01340 (2) Washer, Bearing 211104 Stem, Trunnion H900 403587
150-15XF6-RK \$ 651.70 Stem Assembly 210127 (2) Top Washer 402485C (2) Packing 208691 Bottom Washer 200716 (2)		

High Pressure Equipment Company

P.O. Box 8248 - 2955 West 17th St., Ste 6 - Erie, PA 16505 USA - Phone: (814) 838-2028 / (800) 289-7447

www.highpressure.com / Sales@highpressure.com



High Pressure Equipment

A GRACO® Company

Trunnion Ball Valves .500 3-Way 90 Degree 10-82BV-RK \$ 738.30 O-Ring B01101 Back-up Ring B01790 Ball Seat Assembly 211096 (2) Packing Washer 211103 (2) Back-up Washer 211105 (4) Trunnion 211676 O-Ring B01893 (3) O-Ring B01340 (2) Washer, Bearing 211104 Stem, Trunnion H900 403587	Trunnion Ball Valves .500 3-Way 180 Degree 10-81BV-RK \$ 760.45 O-Ring B01101 Back-up Ring B01790 Ball Seat Assembly 211096 (2) Packing Washer 211103 (2) Back-up Washer 211105 (4) Trunnion 211675 O-Ring B01893 (3) O-Ring B01340 (2) Washer, Bearing 211104 Stem, Trunnion H900 403587	402633-45-RK \$ 200.60 O-Ring B00821 Stem Seat 208554 Seal Ring 210857
Ball Valves Trunnion Ball Valves .187 3-Way 180 Degree 20-72BV-RK \$ 308.05 O-Ring B01117 (3) Back-up Ring B01578 Ball Seat Assembly 210233 (2) Packing Washer 210234 (2) Back-up Washer 210286 (4) Trunnion 210235 O-Ring B00823 (2) O-Ring B01032 Stem, Trunnion 210229 Washer, Bearing, Peek 210230	Free-Floating Ball Valves 10/15/2016BV-RK \$ 273.40 O-Ring B00821 (2) Stem 208644 Top Packing Washer 207731-AM45 Packing B01392 (2) Bottom Packing Washer 207732 Bearing Washer 208646 Ball 208647 Ball Seat 208648 (2)	402633-60-RK \$ 200.60 O-Ring B00821 Stem Seat 208554 Seal Ring 210858
Trunnion Ball Valves .375 3-Way 180 Degree 15-75BV-RK \$ 387.10 O-Ring B01117 Back-up Ring B01578 Ball Seat Assembly 210220 (2) Packing Washer 210223 (2) Back-up Washer 210288 (4) Trunnion 210224 O-Ring B01584 (2) O-Ring B01583 O-Ring B00809 (2) Stem, Trunnion 210229 Washer, Bearing, Peek 210230	Relief Valves / Factory Set 402633-03-RK \$ 200.60 O-Ring B00821 Stem Seat 208554 Seal Ring 208547 402633-10-RK \$ 200.60 O-Ring B00821 Stem Seat 208554 Seal Ring 208547 402633-20-RK \$ 200.60 O-Ring B00821 Stem Seat 208554 Seal Ring 208537 402633-30-RK \$ 200.60 O-Ring B00821 Stem Seat 208554 Seal Ring 208548	Relief Valves / Field Adjustable HIP10RV-RK \$ 130.40 O-Ring B01635 Nylon Seat 210368 Spring B01622 Washer 210365 O-Ring B01619 Packing 210451 Washer 210450 HIP20RV-RK \$ 130.40 O-Ring B01635 Nylon Seat 210368 Spring B01622 Washer 210365 O-Ring B01619 Packing 210451 Washer 210450

High Pressure Equipment Company

P.O. Box 8248 - 2955 West 17th St., Ste 6 - Erie, PA 16505 USA - Phone: (814) 838-2028 / (800) 289-7447

www.highpressure.com / Sales@highpressure.com



High Pressure Equipment

A GRACO® Company

MINI HIPPO Air Operated Valves		HIPCO-LF9-RK \$ 189.15	HIPCO-60R-RK \$ 291.30
MH-AF2-RK \$ 186.60		Lower Stem 207467	Stem 209426
Stem 209426		Stem Pin 207983	Top Washer 200717
Top Washer 200717		Top Washer 207738	Packing Set 214089
Packing B00195		Packing Set 207341 (2)	Bottom Washer 200716
Bottom Washer 200716		Bottom Washer 207342	Diaphragm B01356
		Diaphragm B01356	Lens Ring 201238
MH-AF4/6-RK \$ 186.60		HIPCO-LF9R-RK \$ 259.50	HIPPO Air Operated Valves (MPO & HPO)
Stem 207624		Lower Stem 207467	HIPPO-AF4/6-RK \$ 180.10
Top Washer 200154		Stem Pin 207983	Stem 212033
Packing B00181		Top Washer 207738	Top Washer 200154
Bottom Washer 200156		Packing Set 207341 (2)	Packing B00181
		Bottom Washer 207342	Bottom Washer 200156
MH-HF4/6/9-RK \$ 199.35		Diaphragm B01356	
Stem 207622		Lens Ring 200897	
Top Washer 200154			HIPPO-LF4/6-RK \$ 208.35
Packing B00181			Stem 211536
Bottom Washer 200156		HIPCO Air Operated Valves	Top Washer 207731
Bottom Spacer 200155		HIPCO-30-RK \$ 199.35	Packing B01392 (2)
		Stem 207622	Bottom Washer 207732
HIPCO Air Operated Valves		Top Washer 200154	
HIPCO-AF4/6-RK \$ 223.70		Packing B00181	
Stem 207624		Bottom Washer 200156	HIPPO-LF4R/6R-RK \$ 275.95
Top Washer 200154		Bottom Spacer 200155	Stem 211536
Packing B00181		Diaphragm B01356	Top Washer 207731
Bottom Washer 200156			Packing B01392 (2)
Diaphragm B01356		HIPCO-30R-RK \$ 265.75	Bottom Washer 207732
		Stem 207622	Lens Ring 208432
HIPCO-LF4/6-RK \$ 246.60		Top Washer 200154	
Stem 208215		Packing B00181	HIPPO-LF9-RK \$ 216.00
Top Washer 207731		Bottom Washer 200156	Lower Stem 207467
Packing B01392 (2)		Bottom Spacer 200155	Stem Pin 207983
Bottom Washer 207732		Diaphragm B01356	Top Washer 207738
Diaphragm B01356		Lens Ring 200753	Packing Set 207341 (2)
			Bottom Washer 207342
HIPCO-LF4R/6R-RK \$ 311.70		HIPCO-60-RK \$ 223.70	HIPPO-LF9R-RK \$ 223.70
Stem 208215		Stem 209426	Lower Stem 207467
Top Washer 207731		Top Washer 200717	Stem Pin 207983
Packing B01392 (2)		Packing Set 214089	Top Washer 207738
Bottom Washer 207732		Bottom Washer 200716	Packing Set 207341 (2)
Diaphragm B01356		Diaphragm B01356	Bottom Washer 207342
Lens Ring 208432			Lens Ring 200897

High Pressure Equipment Company

P.O. Box 8248 - 2955 West 17th St., Ste 6 - Erie, PA 16505 USA - Phone: (814) 838-2028 / (800) 289-7447

www.highpressure.com / Sales@highpressure.com



High Pressure Equipment

A GRACO® Company

HIPPO Air Operated Valves (MPO & HPO) HIPPO-30-RK \$ 201.90 Stem 211527 Top Washer 200154 Packing B00181 Bottom Washer 200156 Bottom Spacer 200155 HIPPO-30R-RK \$ 269.70 Stem 211527 Top Washer 200154 Packing B00181 Bottom Washer 200156 Bottom Spacer 200155 Lens Ring 200753 HIPPO-60-RK \$ 318.20 Stem 211539 Top Washer 200717 Packing Set 214089 Bottom Washer 200716 HIPPO-60R-RK \$ 385.85 Stem 211539 Top Washer 200717 Packing Set 214089 Bottom Washer 200716 Lens Ring 201238 NPT Hand Valves - 1/2", 3/4", & 1" 10-NFD-RK \$ 170.40 Stem 203976 Top Washer 203524 Packing B00185 (2) Bottom Washer 201764 10FNFF/H-RK \$ 290.05 Lower Stem 208685 Top Washer 208756 Packing 208741 (2) Bottom Washer 208757	NPT Hand Valves - New Style 10-NFA/B/C-RK \$ 134.25 Lower Stem 213910 Top Washer 200154 Packing B00181 Bottom Washer 200156 Bottom Spacer 200155 15F-NFA/B-RK \$ 116.35 Lower Stem 213933 Top Washer 207731 Packing B01392 (2) Bottom Washer 207732 15F-NFC/D-RK \$ 144.45 HIPCO NPT Air Operated Valves HIPCO10NFA-RK \$ 230.45 Stem 207622 Top Washer 200154 Packing B00181 Bottom Washer 200156 Diaphragm B01356 HIPCO10NFB-RK \$ 230.45 Stem 207622 Top Washer 200154 Packing B00181 Bottom Washer 200156 Diaphragm B01356 HIPCO10NFC-RK \$ 230.45 Stem 207622 Top Washer 200154 Packing B00181 Bottom Washer 200156 Diaphragm B01356	HIPCO15FNFA/B-RK \$ 246.60 Stem 208215 Top Washer 207731 Packing B01392 (2) Bottom Washer 207732 Diaphragm B01356 HIPCO15FNFC/D-RK \$ 189.15 Lower Stem 207467 Stem Pin 207983 Top Washer 207738 Packing Set 207341 (2) Bottom Washer 207342 Diaphragm B01356 HIPPO NPT Air Operated Valves (MPO & HPO) HIPPO-15FNFA/B-RK \$ 208.35 Stem 211536 Top Washer 207731 Packing B01392 (2) Bottom Washer 207732 HIPPO-15FNFC/D-RK \$ 153.35 Lower Stem 207467 Stem Pin 207983 Top Washer 207738 Packing Set 207341 (2) Bottom Washer 207342
---	--	--

High Pressure Equipment Company

P.O. Box 8248 - 2955 West 17th St., Ste 6 - Erie, PA 16505 USA - Phone: (814) 838-2028 / (800) 289-7447

www.highpressure.com / Sales@highpressure.com



High Pressure Equipment

A GRACO® Company

Graco High Pressure Equipment Inc.

P.O. Box 8248, 2955 West 17th Street

Erie, Pennsylvania 16505 U.S.A.

Phone: (814) 838-2028 / 1-800-289-7447

Fax: (814) 838-6075

E-Mail: sales@highpressure.com

Web Site: www.highpressure.com

Graco High Pressure Equipment Inc. reserves the right to make changes to the information and pricing provided in this publication without prior notice.

© 2026 Graco High Pressure Equipment Inc.

HiP Domestic Price List